

642-961 – Cisco Data Center Networking Infrastructure Solutions Design

<http://www.Pass-Guaranteed.com>



100% Pass-Guaranteed or Your Money Back!!!

642-961 Practice Exam Questions Demo

QUESTION: 1

Which statement best describes the data center core layer?

- A. connects to the campus aggregation layer
- B. provides a resilient Layer 2 routed fabric
- C. is typically merged with the campus core layer
- D. load balances traffic between the core and aggregation layers

Answer: D

QUESTION: 2

Which type of network in an HPC environment most requires low latency?

- A. MPI
- B. access
- C. private
- D. storage

Answer: A

QUESTION: 3

Which type of HPC application requires low latency?

- A. financial analytics
- B. finite element analysis
- C. digital image rendering
- D. seismic and geophysical modeling

Answer: B

QUESTION: 4

A very large blade-server deployment has high throughput requirements for both data and storage networks.

Which access layer option would you recommend?

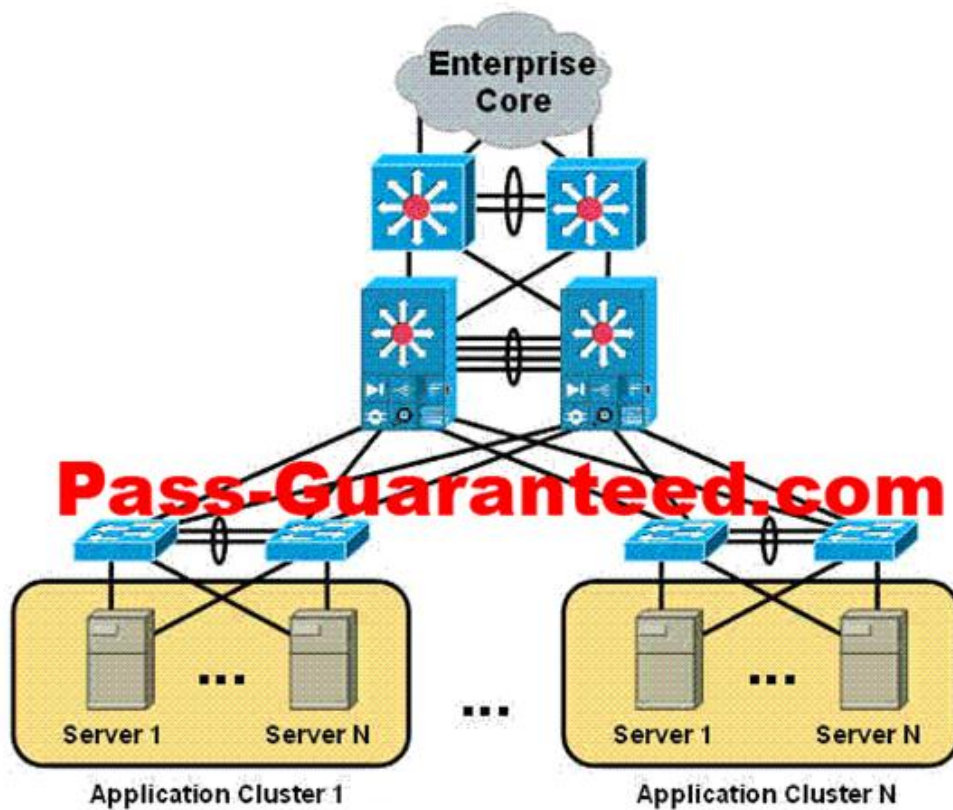
- A. blade server Ethernet switch with Cisco SFS 3000 Series Multifabric Switch
- B. blade server InfiniBand switch with Cisco SFS 3000 Series Multifabric Switch
- C. blade server Ethernet switch that is connected to Cisco Catalyst 4948 top-of-rack switch
- D. blade server Ethernet switch that is connected to Cisco Catalyst 6500 Series end-of-rack switch

Answer: B

QUESTION: 5

Refer to the exhibit.

100% Pass-Guaranteed or Your Money Back!!!



Where is Layer 2 adjacency required?

- A. server-to-server only
- B. access-to-server only
- C. aggregation-to-access only
- D. aggregation-to-access and access-to-server

Answer: B

QUESTION: 6

Refer to the exhibit.



What is a feature of this spanning-tree topology?

- A. VLANs are not restricted to access-switch pairs.
- B. Only one aggregation-to-access uplink is active at a given time.
- C. If the link between access-switch pairs is broken, the return IP path may be broken.
- D. Uplink failures on access layer switches will not break connectivity between servers and service modules in the aggregation layer.

Answer: C

QUESTION: 7

How is FCIP traffic marked with DSCP values?

- A. The Cisco MDS 9000 Series Multilayer Switch marks one DSCP value per FCIP tunnel.
- B. The Cisco MDS 9000 Series Multilayer Switch marks two DSCP values per FCIP tunnel.
- C. The aggregation layer Ethernet switch marks one DSCP value per FCIP tunnel.
- D. The aggregation layer Ethernet switch marks two DSCP values per FCIP tunnel.

Answer: B

QUESTION: 8

Which of the following attack types should be mitigated in the data center core layer?

- A. port scans
- B. IP spoofing
- C. DDoS attacks

642-961 Practice Exam Questions Demo

D. MAC address spoofing

Answer: C

QUESTION: 9

Which statement is correct about the Cisco Catalyst 4948 Switch?

- A. is nonblocking
- B. performs only Layer 2 switching
- C. has up to 48-Gbps wire-speed performance
- D. balances lower cost with lower-performance access layer switching

Answer: A

QUESTION: 10

Which statement describes an IDS module operating in inline rather than promiscuous mode?

- A. lower latency
- B. higher latency
- C. lower throughput
- D. higher throughput
- E. higher latency and lower throughput
- F. lower latency and higher throughput

Answer: B

QUESTION: 11

Refer to the exhibit.



What do you need to configure to prevent spanning-tree loops from occurring between the two FWSMs?

- A. FWSMs in transparent mode
- B. ethertype ACLs to allow BPDUs
- C. FWSMs in multiple-context mode
- D. failover and state interfaces on the same VLAN

Answer: B

QUESTION: 12

How many FWSM modules are needed to support 8 Gbps of throughput through an aggregation module?

- A. one
- B. two
- C. four
- D. eight

Answer: B

QUESTION: 13

What advantage do 10-Gigabit Ethernet uplinks have over EtherChannels?

642-961 Practice Exam Questions Demo

- A. more reliable
- B. higher bandwidth
- C. faster convergence time
- D. better load balancing of traffic

Answer: D

QUESTION: 14

According to Cisco best practice, which service module should be placed in service switches within the aggregation layer?

- A. NAM
- B. CSM
- C. IDSM
- D. FWSM

Answer: B

QUESTION: 15

What is the total bandwidth available to a Cisco Catalyst 6500 Series CEF720 line card?

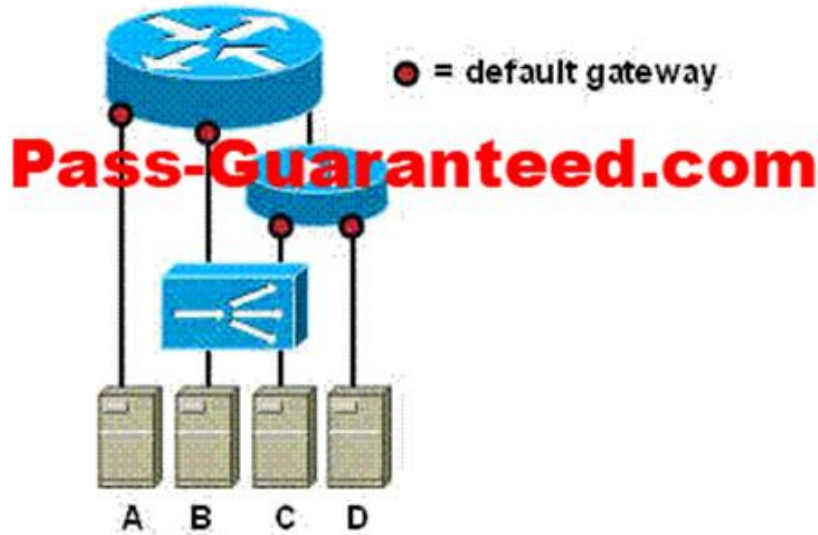
- A. 16 Gbps
- B. 20 Gbps
- C. 32 Gbps
- D. 40 Gbps
- E. 48 Gbps

Answer: D

QUESTION: 16

Refer to the exhibit.

100% Pass-Guaranteed or Your Money Back!!!



Each letter (A-D) represents a model for placement of a default gateway.

Which model allows the maximum number of application and security services?

- A. model A
- B. model B
- C. model C
- D. model D

Answer: C

QUESTION: 17

Which three of the following service modules can be deployed in redundant pairs with active/active failover?
(Select three)

- A. ACE
- B. CSM
- C. NAM
- D. IDSM
- E. FWSM
- F. SSLSM

Answer: A, D, E

QUESTION: 18

What is the Cisco best-practice recommendation for the maximum number of HSRP instances per aggregation module?

- A. 3
- B. 30
- C. 300

642-961 Practice Exam Questions Demo

D. no recommended maximum

Answer: C

QUESTION: 19

Which security technique would you use to protect servers from SYN-flooding DoS attacks?

- A. uRPF
- B. TCP intercept
- C. TCP RPF check
- D. drop and shutdown thresholds

Answer: B

QUESTION: 20

Which data center network-architecture change is a result of the adoption of blade and 1-RU server technologies?

- A. Layer 3 fault domains growing larger
- B. Layer 2 fault domains growing larger
- C. Layer 3 fault domains growing smaller
- D. Layer 2 fault domains growing smaller

Answer: B

100% Pass-Guaranteed or Your Money Back!!!