

Computer Systems Odessa

Image Guide **MEDICAL**

for
ConceptDraw
MEDICAL

www.conceptdraw.com

© 2001 Computer Systems Odessa.
All right reserved.
ConceptDraw and ConceptDraw logo
are registered trademarks
of Computer Systems Odessa.

Contents

BONES	5
CARDIOVASCULAR	9
DIGESTIVE	12
ENDOCRINE	15
GENITAL	17
MUSCLES	19
NERVOUS	22
RESPIRATORY	25
SENSORY	27
UNITARY	29

BONES



Breastbone



Chest 1



Chest 2



Chest 3



Femur 1



Femur 2



Foot 1



Foot 2



Foot 3



Forearm



Hand 1



Hand 2



Hip



Humerus 1



Humerus 2



Leg



Pelvis



Sacrum 1



Sacrum 2



Scapula 1



Scapula 2



Skeleton



Skull 1



Skull 2



Skull 3



Skull 4



Skull 5



Tibia



Vertebral column 1



Vertebral column 2



Vertebral column 3

CARDIOVASCULAR



Aorta 1



Aorta 2



Cardiovascular 1



Cardiovascular 2



Carotid Artery



Chambers 1



Chambers 2



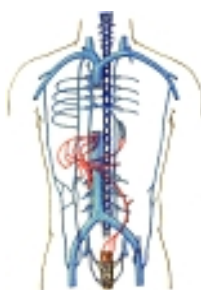
Femoral Artery



Heart



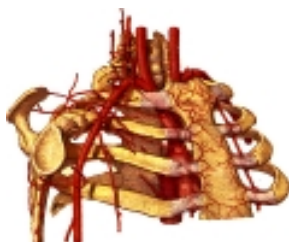
Heart Borders



Portal System



Spleen



Subclavian Artery 1



Subclavian Artery 2



Veins 1



Veins 2



Veins 3



Veins 4



Veins 5

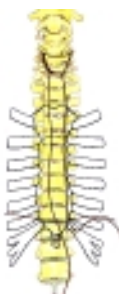
DIGESTIVE



Appendix



Esophagus 1



Esophagus 2



Gallbladder



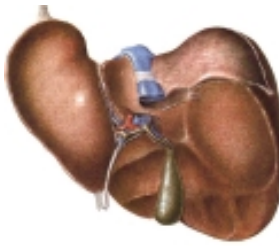
Incisor



Intestine



Liver 1



Liver 2



Molar



Mouth Cavity 1



Mouth cavity 2



Pancreas



Rectum

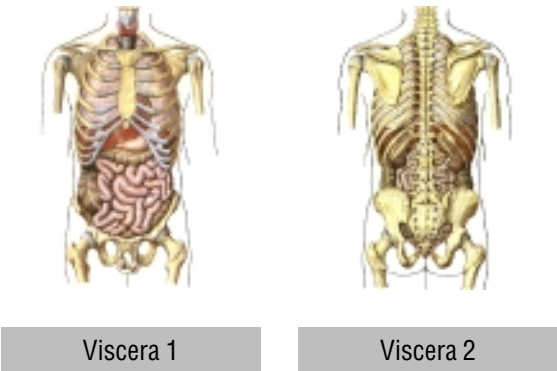
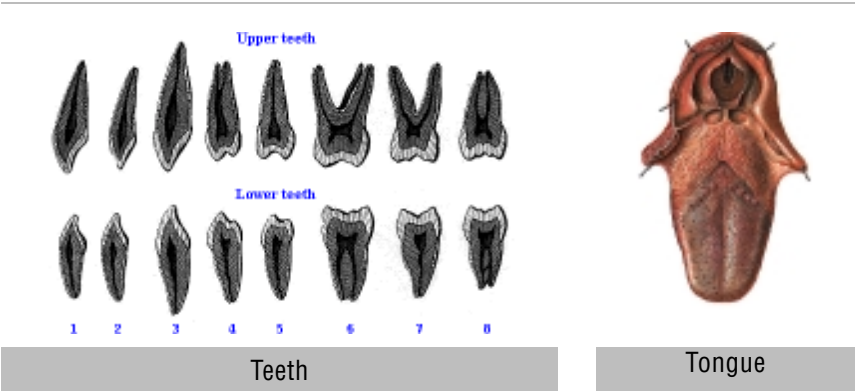


Stomach 1

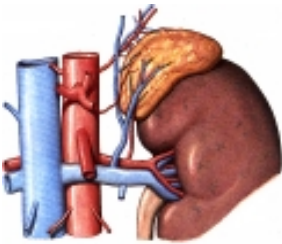


Stomach 2

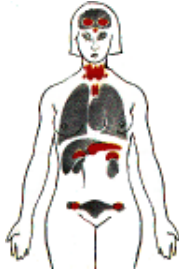
Image Guide



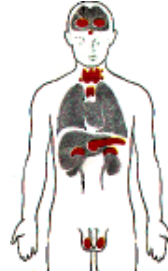
ENDOCRINE



Adrenal



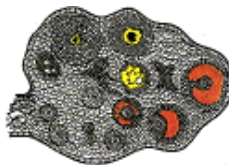
Endocrine F



Endocrine M



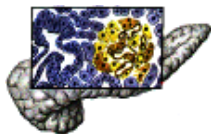
Hypophysis



Ovarium



Pancreas



Pancreatic Islets



Parathyroid Glands



Testicles

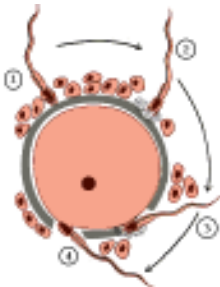


Testis



Thymus

GENITAL



Fertilization



Genital F



Genital M



Mamma 1



Mamma 2



Pregnancy



Spermatozoid



Urogenital F



Urogenital M



Uterus

MUSCLES



Arm



Crus 1



Crus 2



Crus 3



Dorsum



Foot 1



Foot 2



Foot 3



Forearm 1



Forearm 2



Forearm 3



Hand 1



Hand 2



Head



Muscles 1



Muscles 2



Neck



Thigh 1



Thigh 2



Thigh 3



Thigh 4

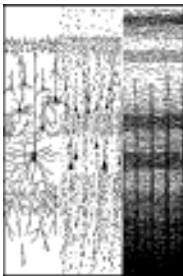


Trunk

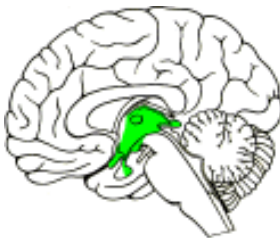
NERVOUS



Cerebellum & Pons



Cortex



Diencephalon



Hemispheres 1



Hemispheres 2



Hemispheres 3



Hemispheres 4



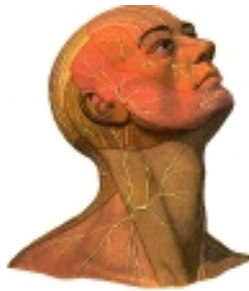
Medulla Oblongata



Midbrain



Motor Area



Nervation Zones 1



Nervation Zones 2



Nervation Zones 3



Nervation Zones 4



Nerve Cell

The image is a composite of anatomical diagrams related to the human nervous system, organized into three rows. Each row contains three distinct illustrations.

Top Row:

- Nervous System:** A posterior view of a human figure showing the distribution of the nervous system, with the brain, spinal cord, and peripheral nerves highlighted in red.
- Parasympathetic:** A lateral view of the human body showing the parasympathetic nervous system pathways, with the vagus nerve and other cranial and sacral nerves highlighted in yellow.
- Skin Sensitivity:** A diagram of the human head and neck showing the distribution of skin sensitivity pathways, with various cranial nerves and their sensory territories highlighted in pink.

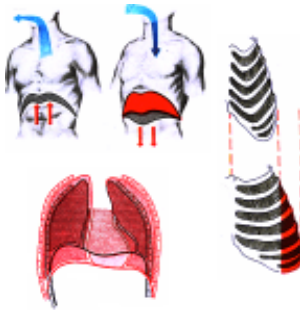
Middle Row:

- Spinal Cord:** A series of seven cross-sections of the spinal cord at different levels: C3, T2, T8, L1, L2, S2, and S3. Each section shows the internal structure, including the gray matter, white matter, and central canal.
- Spinal Cord 2:** A detailed cross-section of the spinal cord showing the internal structure, including the gray matter, white matter, and central canal, with different regions highlighted in various colors (pink, yellow, red, green, blue).

Bottom Row:

- Spinal Nerves:** A lateral view of the human body showing the distribution of the spinal nerves, with the nerves highlighted in red.
- Sympathetic:** A lateral view of the human body showing the sympathetic nervous system pathways, with the thoracic and lumbar regions highlighted in red.
- Telencephalon:** A lateral view of the human brain showing the telencephalon, with the cerebral cortex and underlying structures highlighted in green.

RESPIRATORY



Breathing



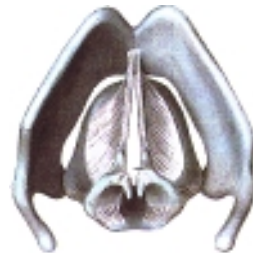
L - Lung



Larynx 1



Larynx 2



Larynx 3



Lungs



R - Lung

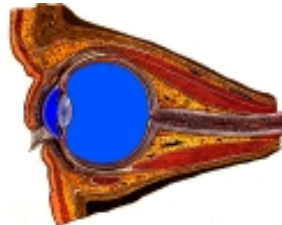
SENSORY



Corti's organ



Ear



Eyeball



Hearing organ



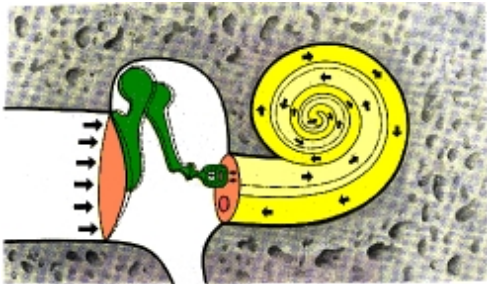
Labyrinth



Lacrimal apparatus



Retina



Sound Transmission

UNITARY



Kidneys 1



Kidneys 2



Nephron



Structure kidney



Structure kidney 2



Urogenital female



Urogenital male