



Prinect

Prinect MetaDimension Prinect MetaShooter

Forward-Looking Solutions for a High-Performance
PDF Workflow with JDF Upgradeability

HEIDELBERG

Increasing PDF Productivity • The new Prinect MetaDimension is a lean RIP and workflow solution offering PDF productivity and JDF upgradeability.



From handling individual jobs to process control of output devices to production management: With Prinect MetaDimension you have the entire prepress stage of your production well in hand.

With Prinect® MetaDimension®, Heidelberg® offers you the ideal entry-level software for establishing a high-performance PDF workflow. Prinect MetaDimension is based on Adobe® standards for processing PostScript® and PDF files. The software is compatible with all film and plate recorders made by Heidelberg and can control a wide range of proofing devices. Even digital printing presses can now be controlled directly by Prinect MetaDimension.

With smaller, easier to handle files and an almost unbeatable speed, Prinect MetaDimension offers you the enhanced PDF productivity you expect from a new workflow solution.

PDF workflow solution for small to medium enterprises

The modular design of Prinect MetaDimension allows you to decide at any time to what extent you want to enhance the performance and degree of automation of your workflow. Prinect MetaDimension supports OPI, trapping, color management, different screening methods, imposition, connection to PPF and an extensive proofing program, giving especially small and medium enterprises access to a workflow solution that represents a secure investment in the future.

In combination with the Prinect® Signa Station® imposition software, Prinect MetaDimension can be upgraded in order to become a layout driven workflow. In addition, it can be used as basis for establishing a complete JDF-based workflow in the framework of Prinect Printready System™.

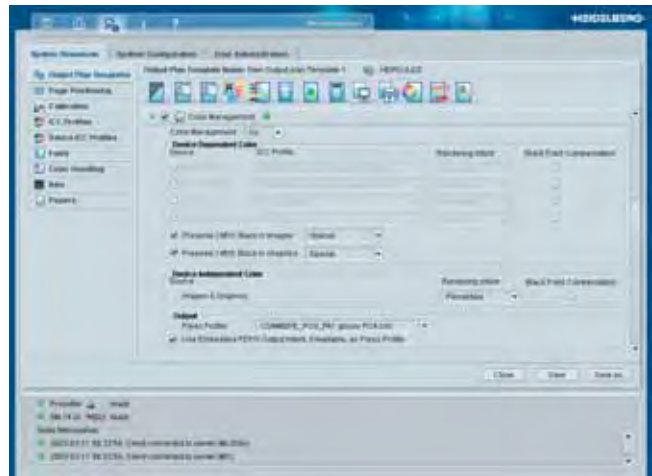
Unique User Convenience • An intuitive user guidance and the clear layout and structure give you total control over all prepress tasks.

Like all new Heidelberg software products Prinect MetaDimension features a user interface with a clear structure designed for ultimate user convenience. At the click of a mouse, the user has interactive control over jobs, output devices, and administrative tasks. All functions are displayed in one window. The start and stop functions, the help functions, and the configuration overview are located directly in the main menu. From there, you can quickly select individual windows for job processing.

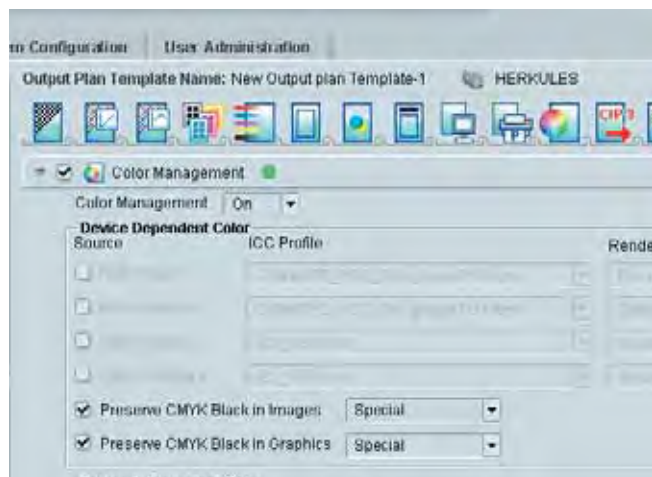
Flexible installation

Prinect MetaDimension is based on a client/server structure with a Java user interface. The software can be called up from any workstation linked to the server. The connected computers use the TCP/IP protocol to communicate with the server, and the users gain access to all functions of the program. This gives you more flexibility in choosing the locations of your workstations.

The modular structure of Prinect MetaDimension allows you to select all required functions, such as proofing, trapping, and screening, from the extensive range of options. Furthermore, Acrobat® plug-ins by Heidelberg and other manufacturers can be integrated effortlessly into the system at any time.

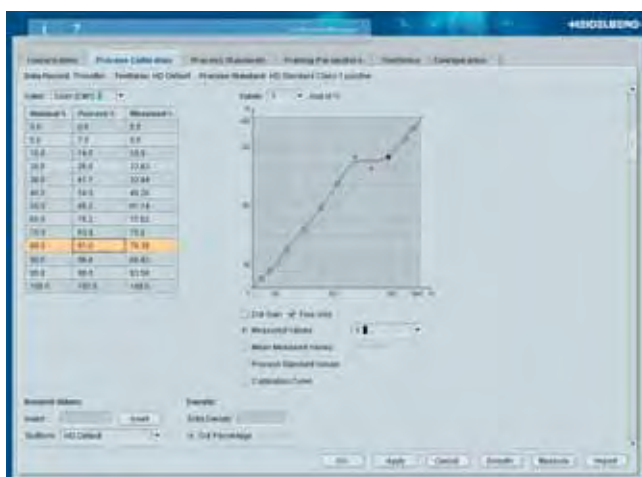


The clearly structured user interface ensures optimum user convenience.

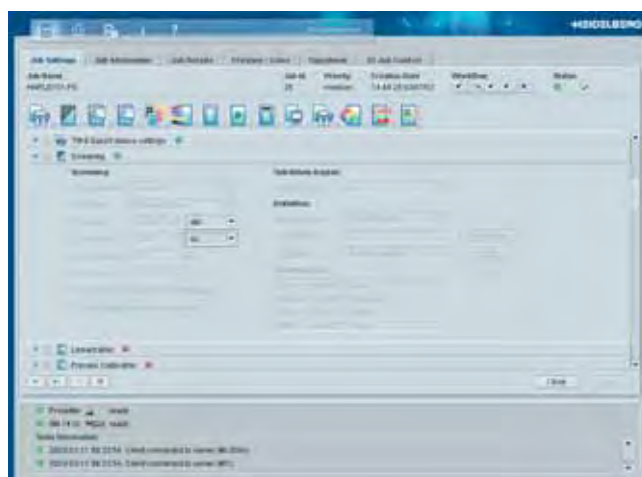


The colored icons are a particularly efficient tool for generating production parameters.

Plug-in Flexibility • Prinect MetaDimension offers you an unprecedented degree of flexibility. To enhance the efficiency of the installed InRIP functions, you can expand your workflow with high-performance plug-ins at any time.



The Calibration Manager allows you to define linearizations, process calibrations and process standards for plate output and printing.



In just a few steps you can define the optimum setting for Satin Screening, the new, frequency-modulated screening process of Prinect MetaDimension.

For all PostScript and PDF files

Prinect MetaDimension uses the Adobe CPSI technology to process all PostScript and PDF files generated by the standard programs of the graphic arts industry. In addition, the interpreter under Prinect MetaDimension supports Open Prepress Interface (OPI), screening, trapping, automatic page positioning, and color management.

Prinect MetaDimension is based on the Adobe PostScript 3 version 3016, the standard printing and imaging software of the graphic arts industry. Parallel processing of the Adobe PostScript 3 software on several processors means better performance in less time, since the use of multi-processor systems speeds up time-consuming rendering processes. In this way, Prinect MetaDimension can help you increase your productivity and reliability while cutting production costs.

Optimum screening

Using the correct screening system is of crucial importance for producing high-quality print products. Some of the world's best-known screening systems – HQS Screening® (High Quality Screening), IS (Irrational Screening), Diamond Screening® and Megadot Plus – were developed by Heidelberg. The Prinect MetaDimension range includes all these options without requiring additional hardware. Now, Prinect MetaDimension also supports Satin Screening, the new generation of frequency-modulated screening systems. Satin Screening considerably increases the quality of color prints. Problems such as tonal gradation, grainy mid-tones or unsatisfactory performance of stochastic screening methods are a thing of the past.

Impressive impositioning

Prinect MetaDimension comes with an InRIP page positioning system. Additional impositioning applications can be integrated easily based on PostScript and job tickets. The new Prinect Signa Station is the perfect complement for Prinect MetaDimension. This new impositioning software features the same user interface and includes all tools required to produce a perfectly impositioned print sheet quickly and reliably.

InRIP color management

As one of the originators of color management, Heidelberg has continuously enhanced the process. You can integrate the ICC-based standards with the InRIP color management into Prinect MetaDimension with ease. This helps maintain color consistency from the screening and proofing stages right through to printing and ensures that RGB documents can be printed correctly using normal office applications.



Plate production can be controlled from the prepress stage as well as from the Prinect CP2000 Center. Starting with version 41, individual plate outputs can be repeated from the Center.

High-quality trapping

Trapping of color separations is essential in order to avoid white paper flashes and color fringes. Prinect MetaDimension features InRIP trapping technology which allows you to automatically generate traps for graphic objects and images. For even more sophisticated trapping, Heidelberg offers the Prinect Trap Editor, the world's first PDF trapper designed as Acrobat plug-in. Prinect Trap Editor is based on the well-known high-end trapping algorithms by Heidelberg and is extremely fast. It can trap an entire document automatically in a matter of seconds.

Prinect Prepress Interface,

Prinect CP2000 Center and Prinect Image Control

Prinect MetaDimension provides data in the open CIP4/PPF format, creating perfect conditions for optimum color presetting at the printing press. The data are calculated using Prinect Prepress Interface and transmitted to the press. Afterwards they are transferred to the Prinect® CP2000 Center®, which automatically selects the suitable presettings for the press. Another essential component of the Prinect workflow is the Prinect Image Control color

measuring system developed by Heidelberg, which helps to shorten set-up times and minimize start-up waste. With its online control and spectrophotometric measuring of the entire sheet, this high-quality color measuring system supports the printer during makeready and color print control, and ensures accurate color control and consistently high quality over the entire print run. At the same time, the printer can use Prinect Image Control to test the stability of the process at any time. In case of deviations from the defined standard, the measured values can be used to recalculate calibration curves and ICC profiles. The deviations can then be taken into account when the next set of plates is imaged, leading to an optimized imaging result.

Enhancing your Performance with TIFF-B • From simple integration into the workflow to bitmap production in advance – Prinect MetaDimension and Prinect MetaShooter increase your performance many times over.



Since Prinect MetaDimension Prep works independently of the platesetter, plate production can take place and be controlled near the pressroom using Prinect MetaShooter.

Prinect MetaDimension Prep and Prinect MetaShooter

More and more enterprises in the graphic arts industry take advantage of a CTP-based production. To benefit even more from the resulting increase of productivity, these enterprises need solutions that create added value while offering user convenience and effortless integration into existing workflows. Based on the TIFF-B format, the two optional modules Prinect MetaDimension Prep and

Prinect® MetaShooter® considerably enhance your pre-press performance and increase user convenience during initial plate production and subsequent production in the pressroom. While Prinect MetaDimension Prep can generate as many bitmaps as you need independently of the imaging unit, Prinect MetaShooter can output the TIFF-B bitmaps generated by the RIP to the connected CTP/CtF recorders.

The format for absolute data integrity: TIFF-B

TIFF-B works like a digital film and ensures absolute data integrity and maximum reliability. The impositioned and screened sheet is saved in this format and can then be processed without any problems. Based on the TIFF-B format, all present and future Heidelberg CtP/CtF recorders can be incorporated into any existing workflow using Prinect MetaShooter. Bitmaps of other workflow systems such as Delta Technology can also be imaged without trouble.

Higher performance through independent functioning

Since Prinect MetaDimension Prep works independently of the recorder, you are free to choose how many bitmaps to generate using the RIP, and at what time. You may, for instance, decide to proof all data during the night and have the bitmaps calculated at the same time. In the morning, all you have to do is switch on the platesetter and start imaging.

Besides making better use of resources, the independent functioning of data processing and actual imaging offers many advantages for the coordination of your plate production, particularly for the subsequent output of printing plates. In the Prinect MetaShooter, you can select individual plates, define the order in which they are to be imaged and change that order at any time. The same applies when plate sets are mixed or reprints are inserted. Reprints are particularly easy to handle with Prinect MetaShooter. This pays off since every staff member is able to select the bitmap of the plate that is to be re-imaged and to start the job without any previous knowledge on job tickets or RIP configuration.

Smooth production

When the RIP is working independently of the imaging unit/the proofer, both the proof and the speed of the RIP remain unaffected by any malfunctions in the recorder. The RIP continues producing the bitmaps you selected. On the other hand, any malfunctions in proofing or in the operating system of the RIP will not affect the imaging process. Since imaging cannot block the interpreter, the time for the calculation is reduced because it generally takes longer to image a plate than to calculate a bitmap. The interpreter is available for the next proof much sooner.

Free choice of location

Prinect MetaShooter, particularly if it is used in combination with Prinect MetaDimension Prep, offers you greater flexibility in choosing a location for the imaging unit. It makes sense to install the unit near the pressroom so that printing plates can be output close to the press. This saves time and effort.

Editing bitmaps with the Prinect TIFF Toolbox

With the Prinect TIFF Toolbox, Heidelberg is offering a new product for editing TIFF-B bitmaps. The Prinect TIFF Toolbox contains all tools you need to trim, rotate, invert or mirror bitmaps. The integrated bitmap viewer allows you to check process and special colors visually. The zoom can be used to check dots, dot shapes, screen angles, and screen rulings.

Consistently Reliable Proofing • Right from the start, Prinect MetaDimension offers a reliable basis for consistently high-quality proofing results.

Direct proofing

Prinect MetaDimension allows you to generate proofs directly from the workflow system. Since both the proof and the actual print are calculated on the same RIP, they match with exceptional accuracy. Prinect MetaDimension also allows you to generate proofs of the selected imposition layout with utmost color accuracy.

Ready for output at any time

Prinect MetaDimension includes the ColorProof Pro proofing engine manager for all proofing applications. The ColorProof Pro offers direct control of proofing devices of the leading drop-on-demand ink jet manufacturers. Since Prinect MetaDimension can export TIFF and PDF files, proofs can also be output on special proofers of other manufacturers. Naturally, proofing and TIFF outputs also support the fully ICC-compatible Heidelberg color management system which is renowned worldwide.

Professional proofing tools

The ICC profiles for printing standards included in Prinect MetaDimension and a large number of proofers offer you a high degree of reliability and flexibility. With the optional Prinect Profile Toolbox, Heidelberg also gives you the means of generating your own profiles in order to optimize the individual color accuracy. This Toolbox includes the newest version of PrintOpen®, Heidelberg's professional ICC profiling software. The software version contains a new function for interactive profile generation. By gradually re-profiling difficult color ranges, you can generate ICC profiles with a medium deviation between proof and print. Such a deviation is almost invisible to the human eye. This color accuracy can be documented. ColorProof Pro allows you to add a print control strip to the proof. With another tool, the Quality Monitor, proof and print/printing standard can then be accurately compared. This evaluation can be given to the customer together with the proof as certificate of quality. A proof by Prinect MetaDimension thereby fulfills the current high requirements in the relationship between printing office/prepress department and the customer.



A real asset for your prepress process: True-color proofs generated from the workflow that produces your plates.

Fully Automated Production • With the JDF modules of the Prinect Printready System, you can establish a fully automated workflow in your printing office, step by step.

As user of the Prinect Printready System, you will be happy to find the same simple menus and uniform design of the user interface that you know from Prinect MetaDimension. Processing and transmission of complex tasks are considerably accelerated and become even more transparent.

Without leaving your workplace, you can access all automated engine modules of the Prinect Printready System, such as trapping, impositioning, preflight or color management, via the clear and easy-to-use Prinect Printready® Cockpit client software. Since the modular components of the Prinect Printready JDF workflow can be purchased and added to an existing Prinect MetaDimension system at any time, you can establish a continuous and fully automated workflow, step by step. In addition to the automation, Prinect offers you the PDF Toolbox with Acrobat plug-ins which permit interactive processing of individual PDF files under visual control in the Prinect Printready System. The Prinect Signa Station is available for interactive, high-quality impositioning.

These special software solutions allow you to further enhance the flexibility of your prepress process.

Automated working with templates

Via the server, the Prinect Printready Engine, you can execute individual production steps automatically. Certain functions that together form a meaningful process are combined into individual sequences. The execution of individual steps is automated via process templates consisting of sequence and group templates. You can determine the degree of automation yourself.

Individual sequence templates can be easily combined into group templates. This makes the operator's work much easier; all that is needed is a one-time definition of standard processes for each of your customers by your administrator. Then you just have to assign a group template to the job and the entire prepress process is executed automatically. Heidelberg provides predefined templates for standard jobs. Of course, you can also define your own templates and determine the degree of automation for entire processes or individual steps yourself.



Sequence and group templates are defined and used in the Prinect Printready Cockpit.

Prinect MetaDimension in the JDF Workflow •

In combination with Prinect Printready System, Prinect MetaDimension offers you the opportunity to establish a fully automated JDF workflow today.



An expansion of Prinect MetaDimension with the new JDF tools allows you to control and monitor the entire prepress workflow from the moment the order is accepted to the actual printing of the job.

Flexible solutions for secure investments

In the past, job ticket formats led to a uniform definition of specific settings and parameters, e.g. for impositioning, trapping, and screening. This development was accompanied by the standardizing of content data in PDF format. Job tickets describing what happens to a job, and the development of a standard data format defining what a job should look like, were the ideal combination for building up a digital workflow.

JDF is an expandable, flexible format representing an even more effective solution than all currently available job ticket systems. It permits an unprecedented form of job management spanning all areas that contribute to print production. While PDF describes individual documents, JDF is a central administration system for all data relating to the control and monitoring of the entire workflow. For the prepress stage, this means a simpler and faster way of handling prepress tasks, including fully automated processing of jobs, more efficient planning,

and full control over every step of the process. Plus commercial and administrative applications that can be easily integrated.

Upgradeable to JDF at any time

As the first supplier worldwide, Heidelberg offers you the possibility of establishing a completely JDF-controlled workflow using the new PDF RIP and workflow software Prinect MetaDimension.

Prinect MetaDimension is already today one of the essential JDF tools of the JDF-based Prinect workflow. Combining Prinect MetaDimension with the JDF compatible modules of the Prinect Printready System, these modules can gradually take over MetaDimension's InRIP functions for impositioning, trapping, and color matching. This means that without having to change to a new system, you can safely enhance the performance of your entire system.



Heidelberg Understands its Customers' Needs •

We employ innovative technologies to drive progress in the print media industry.

Only Heidelberg supplies genuinely integrated, open solutions to the print media industry. From prepress data management all the way to finishing, we deliver forward-looking technology for every stage of the production process. Heidelberg's software and services help customers optimize processes and print quality. We also sell consumables in many countries to enable customers to consistently achieve best results and reliable production.

We understand that our customers' profitability depends on optimizing two factors: equipment and overall workflow. That is why we developed Prinect, a seamless workflow management system that gives printers greater efficiency and transparency to speed job turnaround.

Extensive training offerings round out the Heidelberg portfolio of solutions. Our Print Media Academy, an international forum for communication and industry knowledge, with branches around the world, offers management seminars and technically oriented product training.

With 250 customer centers around the globe, Heidelberg operates the print media industry's most extensive service network. Our services cover the entire workflow, and high-quality original Heidelberg Service Parts are delivered quickly to destinations anywhere in the world.

Above: Print Media Academy, Heidelberg
Below left: World Logistics Center, Wiesloch; below right: Heidelberg Speedmaster



Heidelberger Druckmaschinen AG

Kurfuersten-Anlage 52–60

69115 Heidelberg

Germany

Phone +49-62 21-92-00

Fax +49-62 21-92-69 99

www.heidelberg.com

Publishing Information

Printed in: 04/04

Photographs: Heidelberger Druckmaschinen AG

Platemaking: CTP

Printing: Speedmaster

Finishing: Stahlfolder, Stitchmaster

Fonts: Heidelberg Gothic, Heidelberg Antiqua

Printed in Germany

Trademarks

Heidelberg, the Heidelberg logotype, Prinect, the Prinect logotype, Axis Control, CP2000 Center, Diamond Screening, Digimaster, HQS Screening, MetaDimension, MetaShooter, Prinance, Prinect Printready, PrintOpen, Signa Station, Speedmaster, Stitchmaster and Sunday are registered trademarks of Heidelberger Druckmaschinen AG in the U.S. and other countries. Compufold, Compustitch, Prinect Printready System and Nexpress are trademarks of Heidelberger Druckmaschinen AG in the U.S. and other countries.

Adobe, PostScript and Acrobat are trademarks of Adobe Systems Incorporated.

All other trademarks are property of their respective owners.

Subject to technical modifications and other changes.

