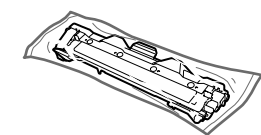
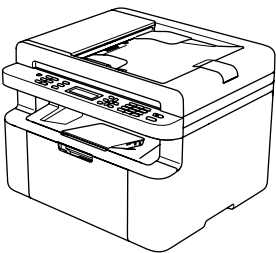


Quick Setup Guide

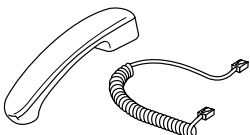
Unpack the machine and check the components



Inbox Toner Cartridge



Telephone Line Cord
(For DocuPrint M118 z)



Safety Guide



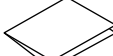
USB Interface Cable



CD-ROM



A5 Long Edge Paper
Input Support



Quick Setup Guide



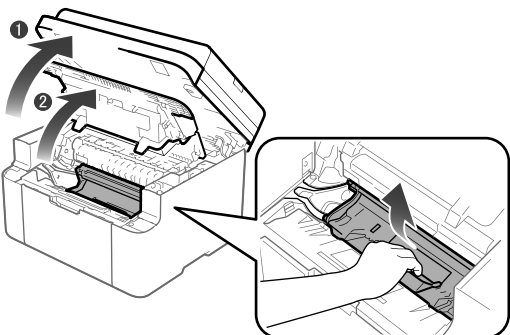
Basic User's Guide

Read the Safety Guide first, then read this Quick Setup Guide for the correct installation procedure.

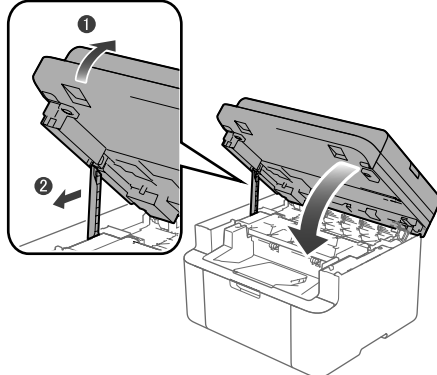
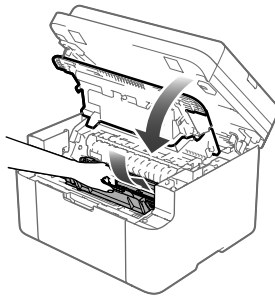
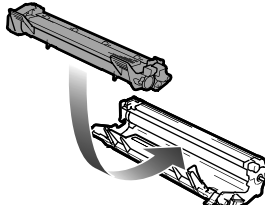
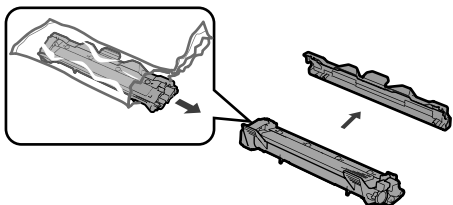
NOTE:

- The illustrations in this Quick Setup Guide are based on the DocuPrint M118 z.
- The USB cable is a standard accessory.

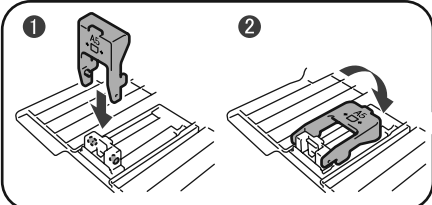
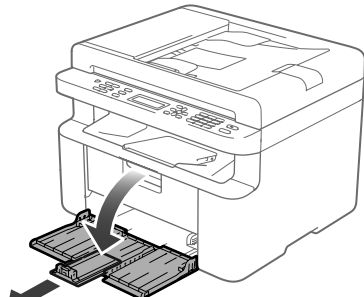
1 Remove the packing materials and install the toner cartridge



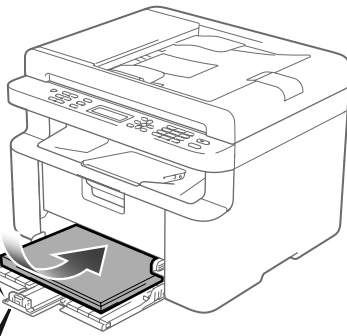
Drum unit (remove the drum unit)



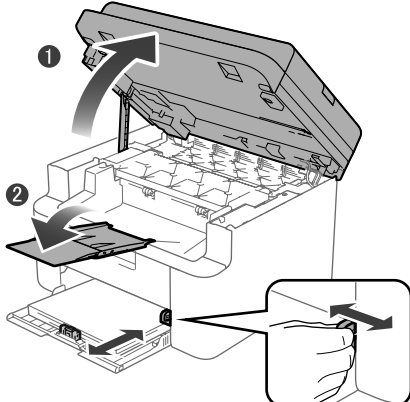
2 Load paper in the paper tray



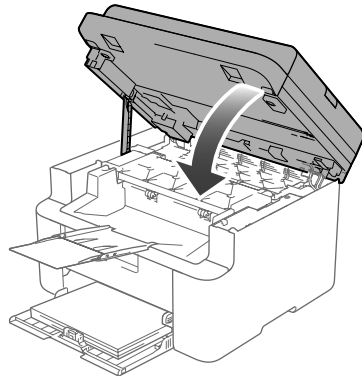
To use A5 Long Edge paper.



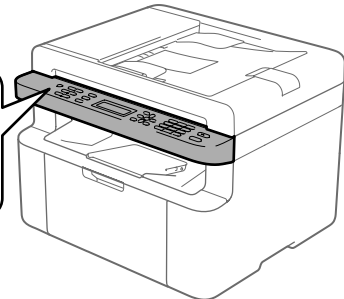
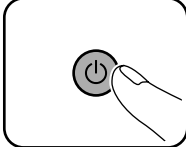
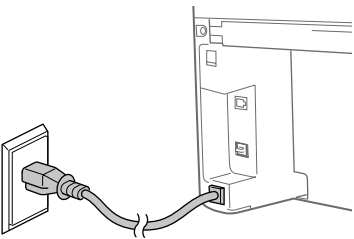
Insert the paper with the
print side face-up.



Adjust the paper guides to fit
the paper being used.



3 Connect the power cord and turn on the machine



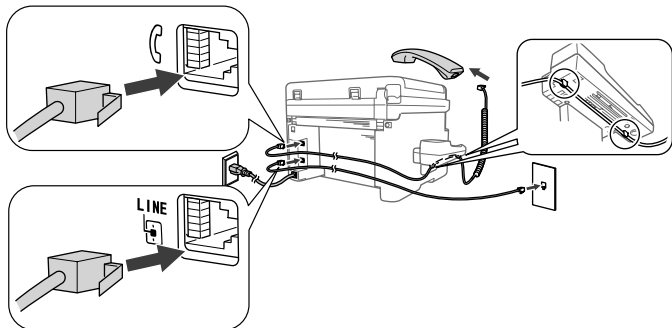
4 Configure the machine for faxing (for DocuPrint M118 z)

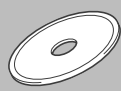
If you do not plan to use the fax feature on this machine, go to step 5.

NOTE:

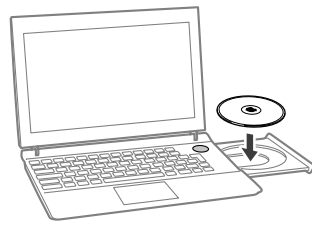
- To complete fax setup on your machine, see the *Basic User's Guide*.
- Your machine is programmed to automatically receive faxes. To change this default mode, see the *Basic User's Guide*.

Connect the telephone line cord





Configuration using the CD-ROM (Windows®)

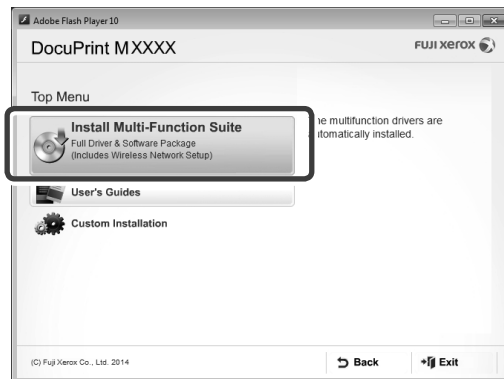


NOTE:

If the Fuji Xerox screen does not appear automatically, go to **Computer**.

(For Windows® 8: click the (File Explorer) icon on the taskbar, and then go to **Computer**.)

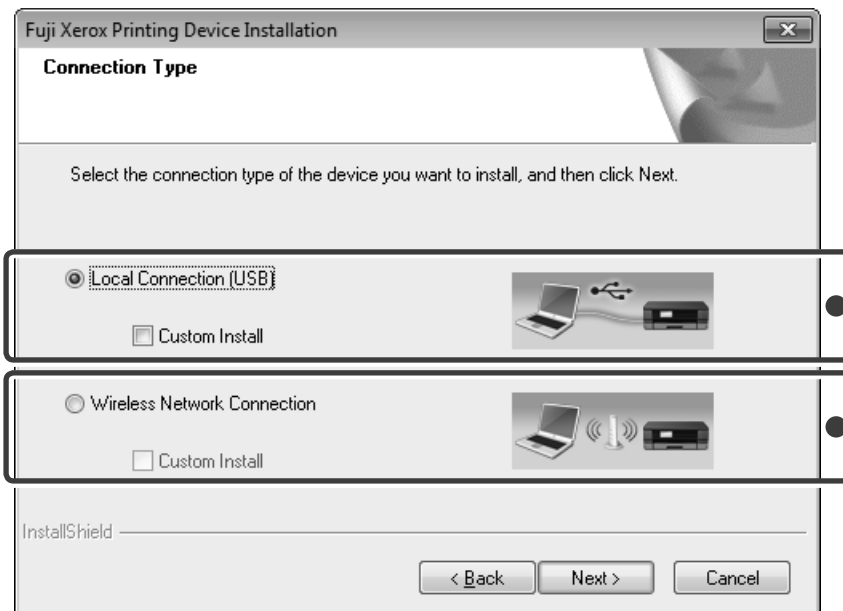
Double-click the CD-ROM icon, and then double-click **start.exe**.



Follow the on-screen instructions until the **Connection Type** screen appears.



Connection Type



For USB Connection

For Wireless Network Connection
We recommend preparing a USB cable to use temporarily during the wireless setup.



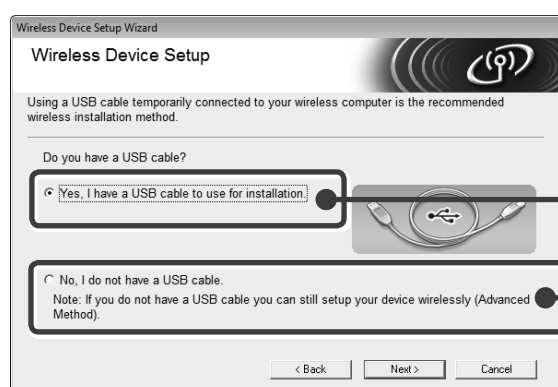
Follow the on-screen instructions to continue installation.



Finish



Wireless Network Connection



[Recommended]

Select this option if you have a USB cable to use temporarily for wireless setup.

Select this option if you do not have a USB cable.



Follow the on-screen instructions to continue installation.



Finish



Configuration without using the CD-ROM (Windows® without CD-ROM drive or Macintosh)

Download the full driver and software package by visiting the Fuji Xerox website at <http://www.fujixeroxprinters.com/>.

After you download the driver and software package, follow the on-screen instructions until the **Connection Type** screen appears. Refer to **5A Configuration using the CD-ROM (Windows®)**.

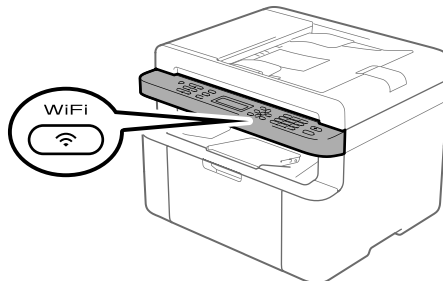


One-push wireless setup for mobile devices (Wireless models only)

If your wireless LAN access point/router supports automatic wireless (one-push) setup (WPS/AOSS™), you can set up your machine without using a computer.



Press the WPS or AOSS™ button on your wireless LAN access point/router.



Press the **WiFi** button on your machine.



Wireless setup is now complete.