

Printer may be installed at FILE instead of USB port.

Information Level: 4

(2 = Semi-confidential, Konica Minolta, internal use only, 3 = Service Partners/Distributors/First Line usage only. 4 = General Information, may be send to end-users.)

Printer involved: PagePro 1300W/1350W/1400W

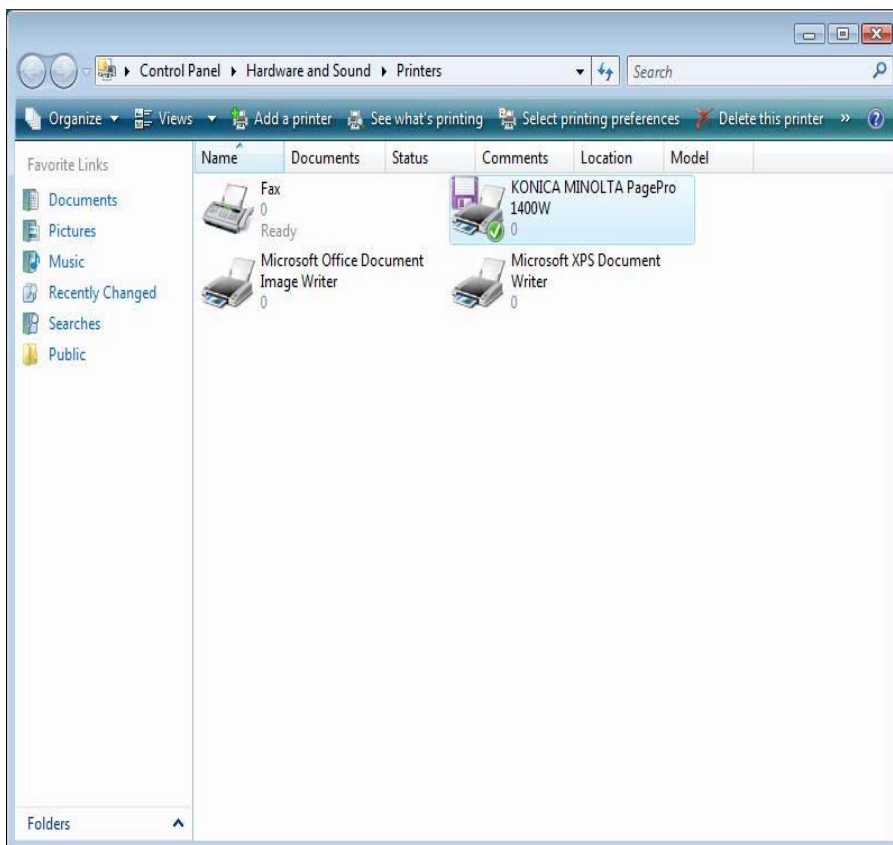
Operating System: Windows Vista

Problem description: Printer may be installed at FILE instead of USB port

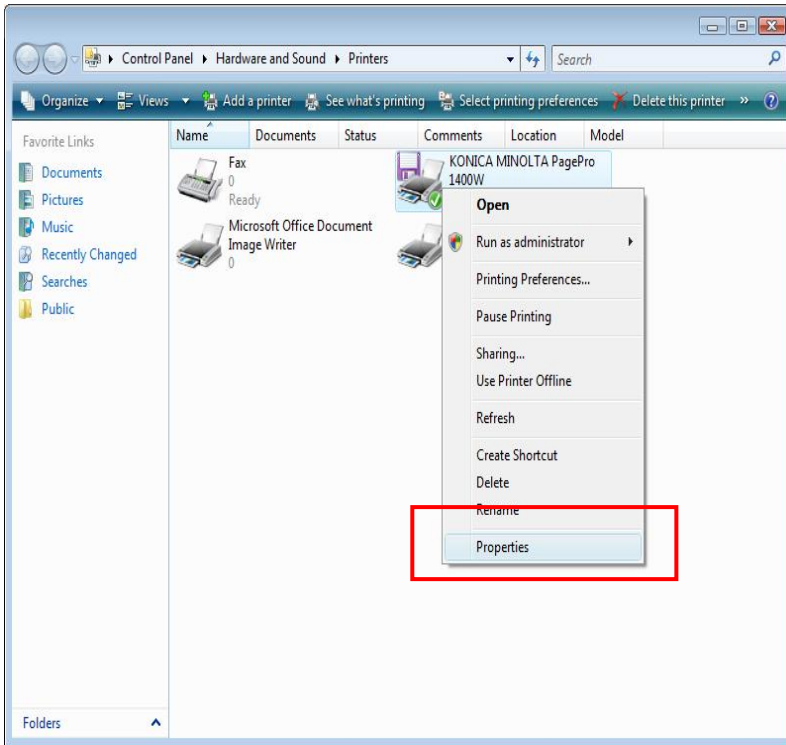
Solution:

In the installation of PagePro 1300W/1350W/1400W driver for Windows VISTA, a port might be set not to USB but FILE. In this case, please change the port setting to USB by following the procedures below:

1) Select "Printers" in the "Control Panel / Hardware and Sound".



(2) Right-click on "PagePro 1400W (or 13xxW)" and select "Properties".



(3) Select a port tab and change the setting from "FILE" to "USBxxx". (The part of "xxx" following "USB" depends on the PC environment of the user.) After the setting, click "OK" to complete the setting.

