

Operating Instructions

Hardware Preparation	1
Software Preparation	2
Printing	3
Software Uninstallation	4
Troubleshooting	5

Read this manual carefully before you use this product and keep it handy for future reference.

Introduction

This manual contains detailed instructions and notes on the operation and use of this machine. For your safety and benefit, read this manual carefully before using the machine. Keep this manual in a handy place for quick reference.

Legal Prohibition

Do not copy or print any item for which reproduction is prohibited by law. Copying or printing the following items is generally prohibited by local law: bank notes, revenue stamps, bonds, stock certificates, bank drafts, checks, passports, driver's licenses. The preceding list is meant as a guide only and is not inclusive. We assume no responsibility for its completeness or accuracy. If you have any questions concerning the legality of copying or printing certain items, consult with your legal advisor.

Trademarks

- Microsoft, Windows, and Windows Vista are either registered trademarks or trademarks of Microsoft Corporation in the United States and/or other countries.
- All other trademarks are the property of their respective owners.

PLEASE NOTE

Contents of this manual are subject to change without prior notice. Some illustrations in this manual might be slightly different from the machine. Certain options might not be available in some countries. For details, please contact your local dealer.

Pictorial Symbols and Other Notations Used in This Manual

In this manual, important items are described using symbols. Please be sure to read the descriptions marked with the followings. Each symbol and notation means as below.

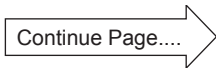
IMPORTANT

: Introduces instructions for correct operation of the machine.

If these instructions are ignored, the machine may not be able to operate at optimum performance or may break down.

REFERENCE

: Introduces information that is useful for operation and maintenance of the machine, or information about the machine's performance, etc.



: Indicates that the description of the operating sequence is continued on the next page.

(→ P. xx "xxxx") : Indicates the page number and item containing related information.

Printing Configuration

The following describes the procedure for online printing with the Digital Duplicator.

1. Hardware Configuration

Connect the Digital Duplicator to the computer.

2. Computer Configuration

The setup procedure will differ according to the OS of the computer. Carry out the installation of the printer driver according to the procedure appropriate for your computer.

3. Print Settings and Printing

Make the settings for the application software and the printer driver before printing.

Contents

Introduction	i
Pictorial Symbols and Other Notations Used in This Manual	ii
Printing Configuration	iii

Chapter 1 Hardware Preparation

Preparing the Computer	2
Confirming System Conditions	2
Connecting the Digital Duplicator and Computer	3

Chapter 2 Software Installation

Installing the Printer Driver	6
Installing the Printer Driver with Installer	6
• When Connecting the Computer and the Digital Duplicator with an USB Cable ..	10
Installing the Printer Driver with [Add Printer]	12

Chapter 3 Printing

Print Settings and Printing	18
-----------------------------------	----

Chapter 4 Software Uninstallation

Uninstalling the Printer Driver	30
Windows 7/Windows 8/Windows 8.1/Windows 10	30
Windows Vista	34

Chapter 5 Troubleshooting

Troubleshooting	38
Restrictions	43

Chapter 1

Hardware Preparation

This chapter describes:

- Computer and system requirements
- Procedure for connecting the Digital Duplicator to the computer

.....	
Preparing the Computer	2
Confirming System Conditions	2
Connecting the Digital Duplicator and Computer	3
.....	

Preparing the Computer

The following describes preparation of the computer.

Confirming System Conditions

The Digital Duplicator can connect to the computer either by USB cable or by printer cable. Select the connection type that matches the interface supported by your computer. Required environments for each connection type are as follows.

Computer	: IBM PC/AT compatible
Operating system	: Windows 10 (32-bit/64-bit) *1 Windows 8.1 (32-bit/64-bit) *1 Windows 8 (32-bit/64-bit) *1 Windows 7 (32-bit/64-bit) Windows Vista (32-bit/64-bit)
Interface	: USB port (USB 2.0/1.1)

*1 Desktop apps only

Connecting the Digital Duplicator and Computer

Connecting the Digital Duplicator and the computer.

Items required

Connector cable : USB AB-type cable (purchased separately)

Note : USB cable length should not exceed 3 meters (10 feet).

1

Hardware Preparation

- 1 Make sure that the power of the Digital Duplicator is turned OFF.
- 2 Connect the cable to the computer interface (USB connector) on the Digital Duplicator. Be sure that the connector is correctly oriented, and insert it all the way in.
- 3 Connect the other end of the cable to a USB port on your computer. Be sure that the connector is correctly oriented, and insert it all the way in.

[illegible]

Chapter 2

Software Installation

This chapter describes how to install the Printer Driver on the computer.

2

.....	
Installing the Printer Driver	6
Installing the Printer Driver with Installer.....	6
• When Connecting the Computer and the Digital Duplicator with an USB Cable ...	10
Installing the Printer Driver with [Add Printer]	12
.....	

Installing the Printer Driver

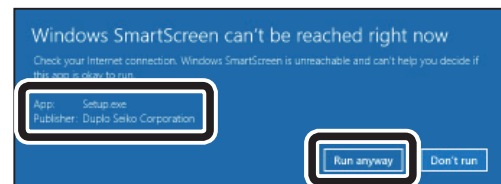
After connecting the Digital Duplicator to the computer, install the printer driver. There are two ways to install the printer driver, using the installer and selecting the driver from [Add a printer].

Installing the Printer Driver with Installer

The following describes the procedure for installing the printer driver on Windows 10.

IMPORTANT

- To install the printer driver, you must sign in as a user with administrator rights.
- If multiple users are allowed on one computer at the same time, please be sure that only one user is signed in.
- If you are using Windows 8 or later version: when you run the installer that has been downloaded from the Website, a Windows SmartScreen message may appear. When you obtain the installer from a reliable supplier, confirm [App:] and [Publisher:], and then click [Run anyway].



1 Make sure that the Digital Duplicator is turned OFF. Turn the computer ON to start the Windows.

2 Insert the CD-ROM that came with the Digital Duplicator into your computer's CD-ROM drive. [Tap to choose what happens with this disc.] appears in the upper right part of the screen. Click the message.

CD Drive (D:) DriverSetup
Tap to choose what happens with this disc.

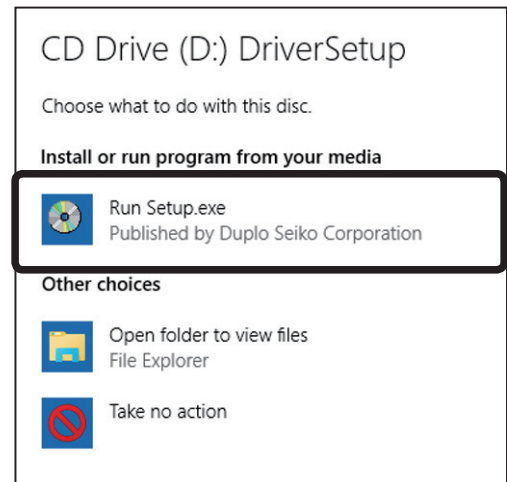
REFERENCE

- If you are using Windows 7 or earlier version, this message screen does not appear. Go to the next step.
- This message will disappear automatically after a certain period of time. In this case, open the drive where the CD-ROM is located from [Computer], then execute [Setup.exe].

3 Click [Run Setup.exe] .

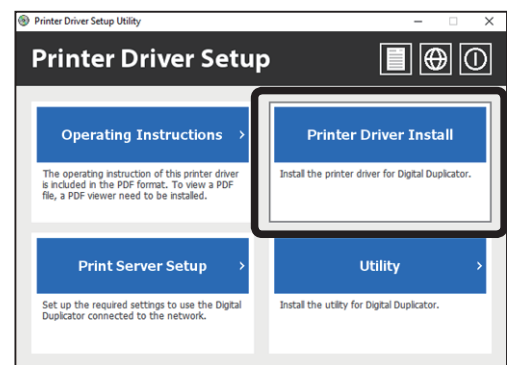
REFERENCE

- If the [AutoPlay] screen does not appear, open the drive where the CD-ROM is located from [Computer], then execute [Setup.exe].

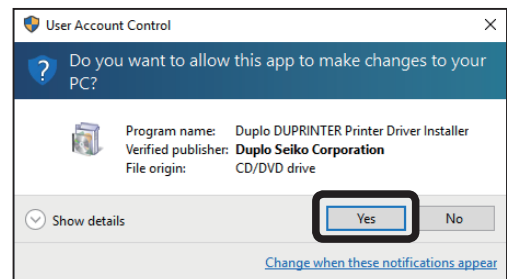


4 Click [Printer Driver Install].

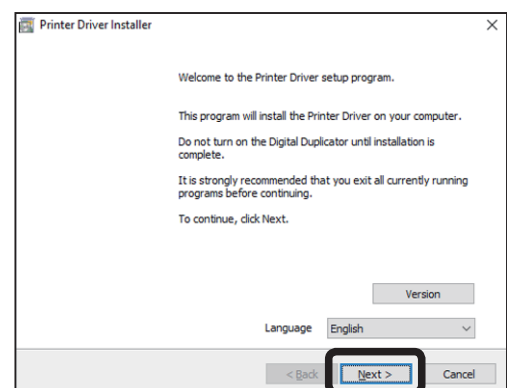
The printer driver setup program will start.



5 User account control message may appear while installation is in progress. Simply click [Yes] to proceed with the installation.

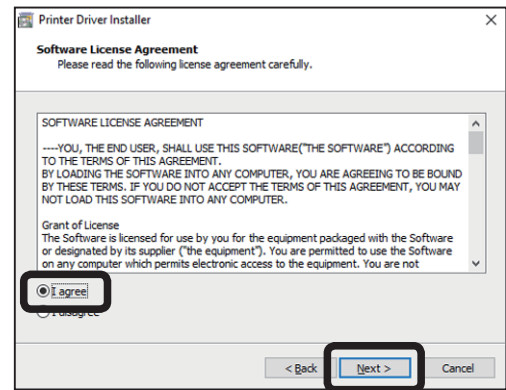


6 Click the [Next] button.

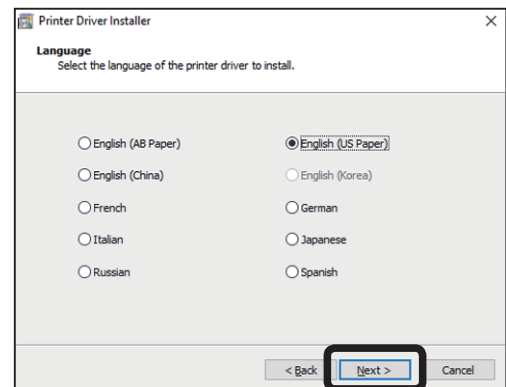


Installing the Printer Driver

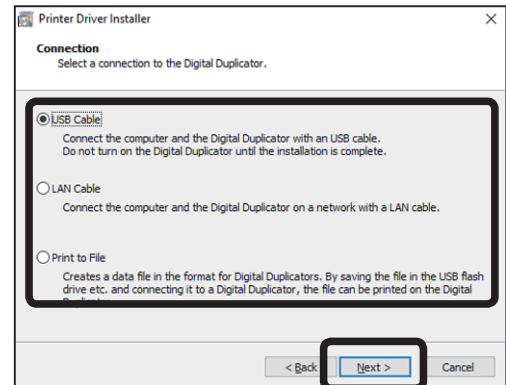
- 7** Read the software license agreement.
Click [I agree], and then click the [Next] button.



- 8** Select the language to be used, and click the [Next] button.



- 9** Select the connection method with Digital Duplicator.
If you select [USB Cable], go to step 12.



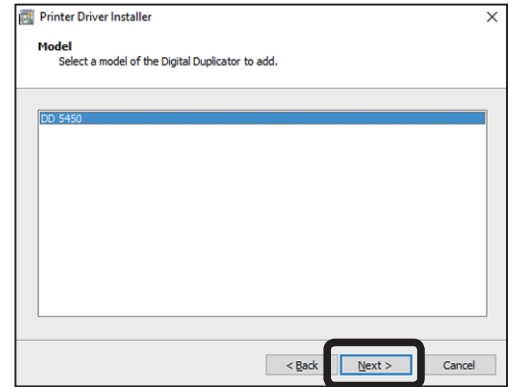
REFERENCE

About [Print to File]:

- File in Duplicator format is created without sending the print data to the printer. You can save the file in the [IMAGE] folder of the USB flash drive to carry.
- The file name input screen does not appear with Windows Store apps. Before you perform printing, click [Control Panel], click [View devices and printers], right-click the printer set for [Print to File], and then select [Printing Preferences] from the menu. Then specify [Default location to save] on the [Print to File] tab.
(→ P.36 “Print Settings and Printing”)
- To perform printing, you need a Digital Duplicator equipped with the optional USB flash drive.

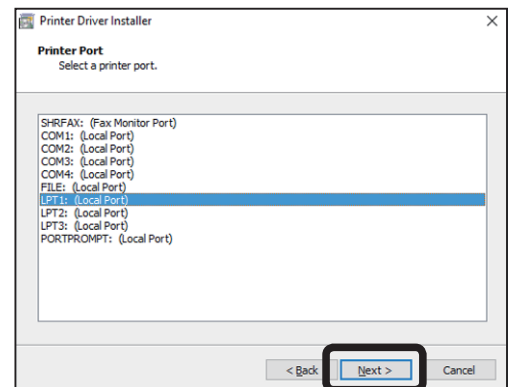
- 10** Select the Digital Duplicator that you are using. Click the [Next] button.

If you select [Print to File], go to step 12.

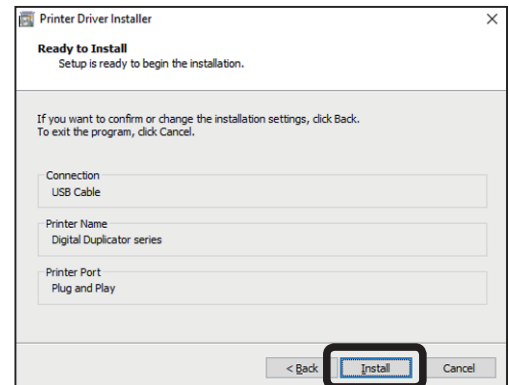


- 11** Select the port to be connected to the Digital Duplicator, and click the [Next] button.

If you are not creating a network port, for now, select [LPT1:] to continue installation. When printer addition is complete, install the [FS-Print] from the CD-ROM.



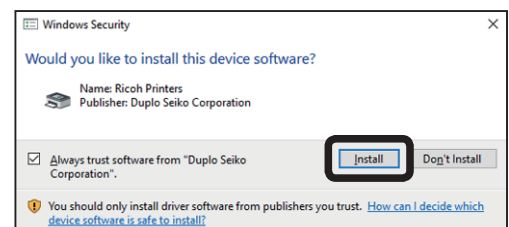
- 12** Confirm the settings, and then click the [Install] button.



- 13** [Windows Security] screen appears. Click the [Install] button to continue the installation.

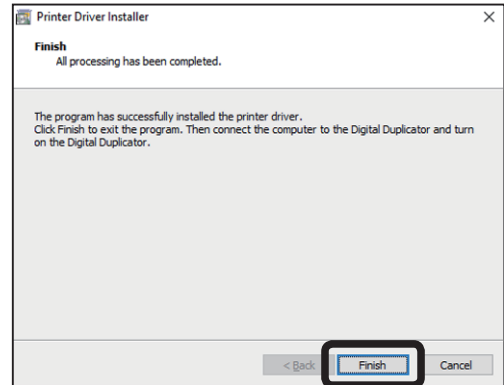
REFERENCE

The contents on the screen varies depending on Windows version. Check it and proceed with the installation.



Installing the Printer Driver

- 14 The printer driver installation is complete. Click the [Finish] button.



- 15 Remove the CD-ROM from the computer.

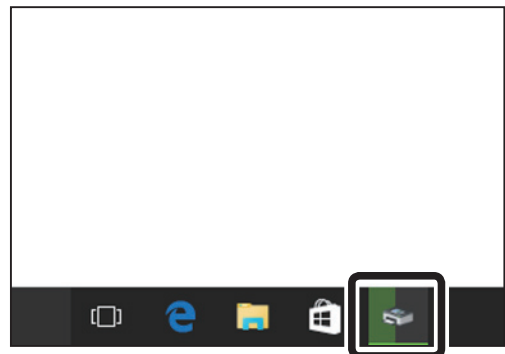
- 16 Make sure that the computer and the Digital Duplicator are correctly connected, and then turn the Digital Duplicator ON.

If you select [USB Cable], refer to “When Connecting the Computer and the Digital Duplicator with an USB Cable or Parallel Printer Cable” on the next .

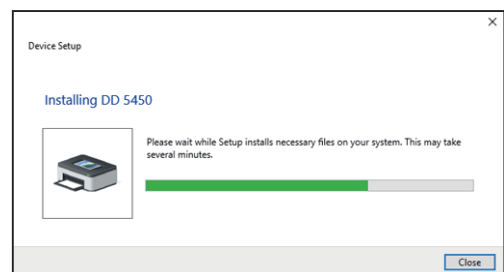
• When Connecting the Computer and the Digital Duplicator with an USB Cable

For Windows 8/Windows 8.1/Windows 10

- 1 Turn on the Digital Duplicator. After a short time, the [Device Setup] icon appears on the task bar.



- 2 Click the [Device Setup] icon. You can confirm installation progress status. After device installation is complete, the dialog will close automatically.



REFERENCE

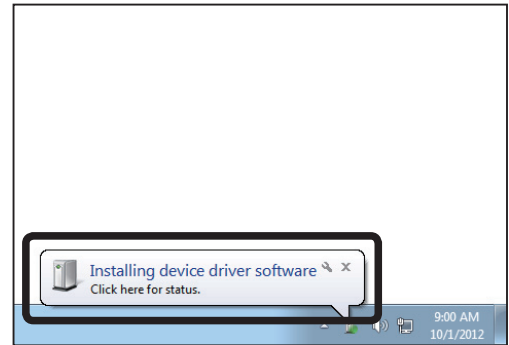
If nothing appears on the screen and the printer cannot be added even after connecting the computer to the Digital Duplicator, see “■When the printer driver cannot be automatically installed on Windows 7/Windows 8/Windows 8.1/Windows 10 with Plug and Play function”.

(→ P.57 “Chapter 5 Troubleshooting”)

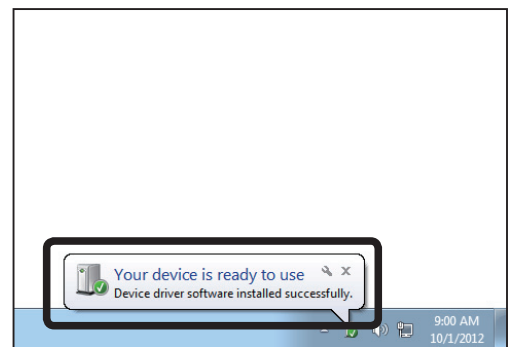
For Windows Vista/Windows 7

- 1 A short time after turning on the Digital Duplicator, the pop-up message [Installing device driver software] appears.

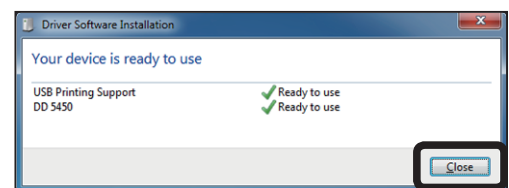
The computer searches the printer driver automatically and the printer will be added. Please wait for a while.



- 2 Printer addition is complete when the pop-up message [Your device is ready to use] appears.



You can confirm the added device details by clicking the pop-up message.



REFERENCE

If nothing appears on the screen and the printer cannot be added even after connecting the computer to the Digital Duplicator, see "■When the printer driver cannot be automatically installed on Windows 7/Windows 8/Windows 8.1/Windows 10 with Plug and Play function".

(→ P.57 "Chapter 5 Troubleshooting")

Installing the Printer Driver with [Add Printer]

The following describes how to install the printer driver with [Add Printer].

IMPORTANT

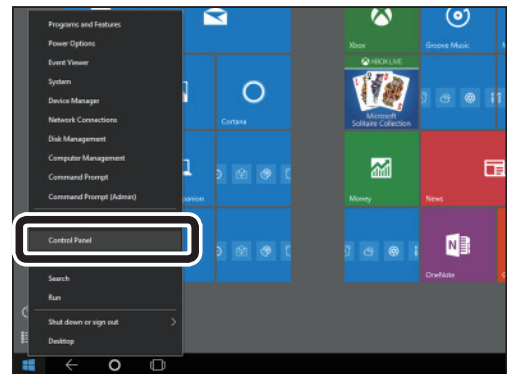
- To install the printer driver, you must sign in as a user with administrator rights.
- If multiple users are allowed on one computer at the same time, please be sure that only one user is signed in.
- There are two types (32-bit, 64-bit) of printer driver.

1

Open [Control Panel].

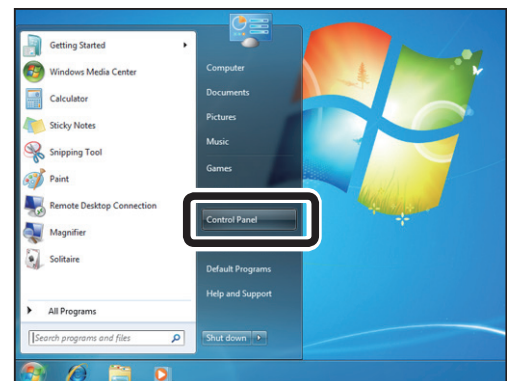
- **Windows 8/Windows 8.1/Windows 10**

Move the mouse cursor to the lower-left corner of the screen and right-click the start button. Select [Control Panel] on the menu.



- **Windows Vista/Windows 7**

Click the [Start] button on the task bar and click [Control Panel] on the menu.



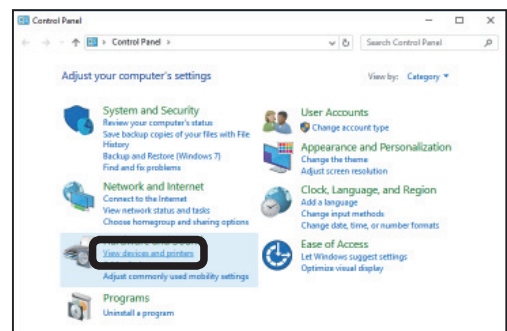
2

- **Windows 7/Windows 8/Windows 8.1/Windows 10**

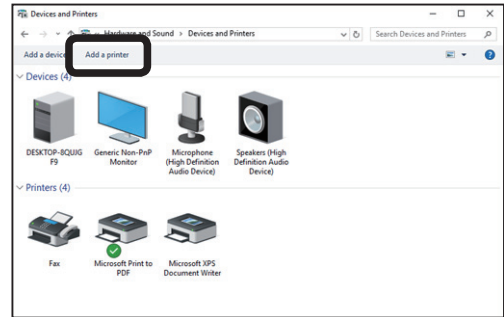
Click [View devices and printers] under the [Hardware and Sound] menu.

- **Windows Vista**

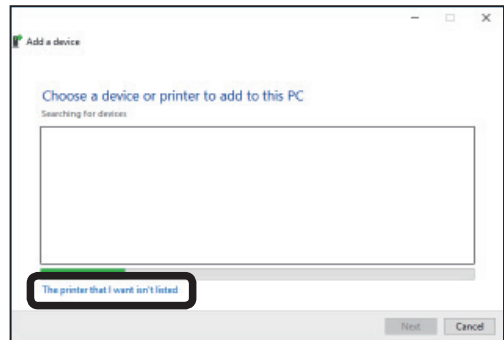
Click [Printer] under the [Hardware and Sound] menu.



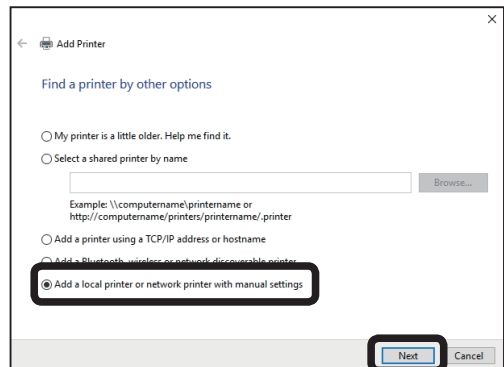
3 Click [Add a printer].



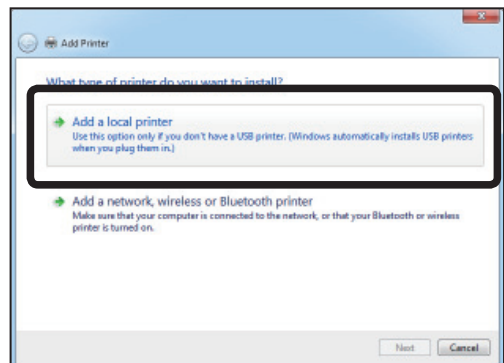
4 Add a local printer.
 • **Windows 8/Windows 8.1/Windows 10**
 Click [The printer that I want isn't listed].



Select [Add a local printer or network printer with manual settings] and click [next].



• **Windows 7/Windows Vista**
 Click [Add a local printer].



Installing the Printer Driver

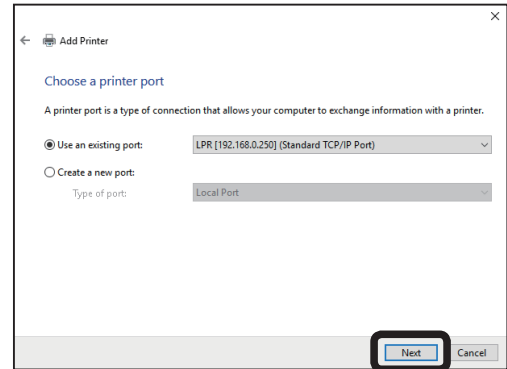
- 5 Choose a printer port.
Click the [Next] button.

REFERENCE

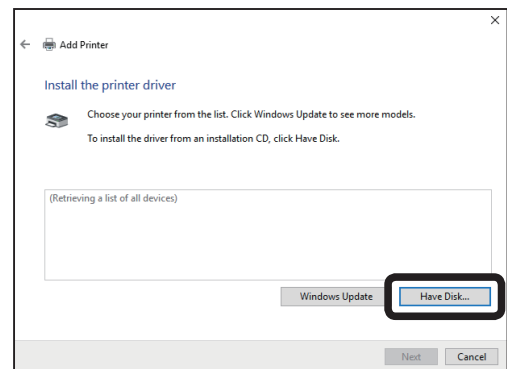
When you create Standard TCP/IP Port without using the tool that has come with the LAN option, refer to the following settings.

[Configure Standard TCP/IP Port Monitor]

Protocol	: LPR
Queue Name	: lp
LPR Byte Counting Enabled	: On



- 6 Click the [Have Disk...] button.



- 7 Insert the CD-ROM that came with the Digital Duplicator into your computer's CD-ROM drive.

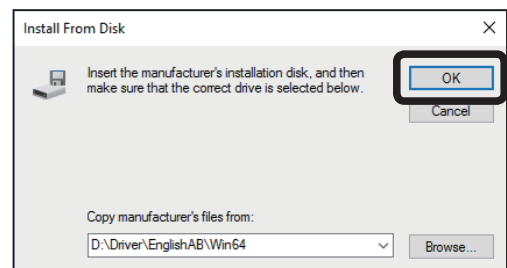
REFERENCE

- If [AutoPlay] appears, close it. It is not used this time.

- 8 Specify the folder that contains the printer driver.

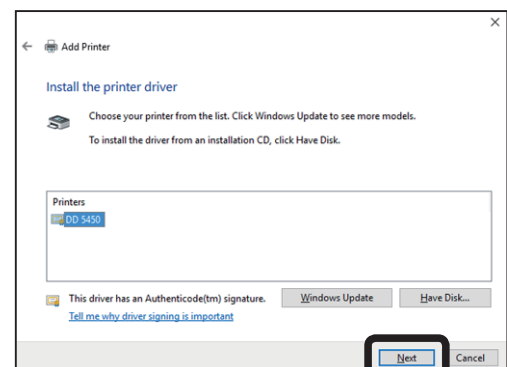
- **Using 64-bit computer**
Example 'D:\Driver\EnglishAB\x64'
- **Using 32-bit computer**
Example 'D:\Driver\EnglishAB\win2k'

Here, the CD-ROM is in Drive D and you are setting up for English (AB paper).

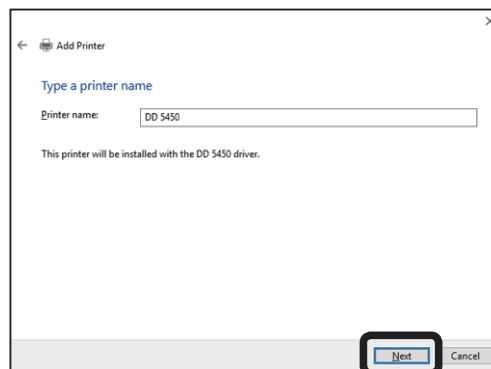


- 9 Select the model name of the Digital Duplicator that you are using from the [Printers] list and click the [Next] button.

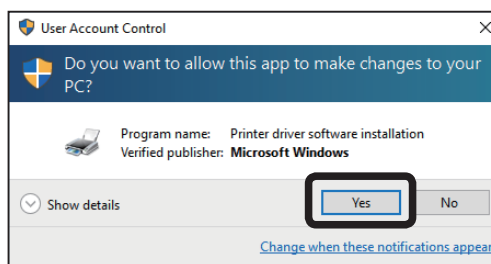
A screen asking whether to keep or replace your current driver with a new one may appear depending on the environment that you are using. In this case, always select [Replace existing driver].



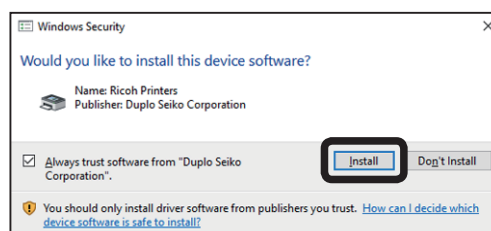
- 10 The model name matching the Digital Duplicator that you are using appears in [Printer name:]. Click the [Next] button.



- 11 If the [User Account Control] confirmation screen appears, click the [Yes] button.



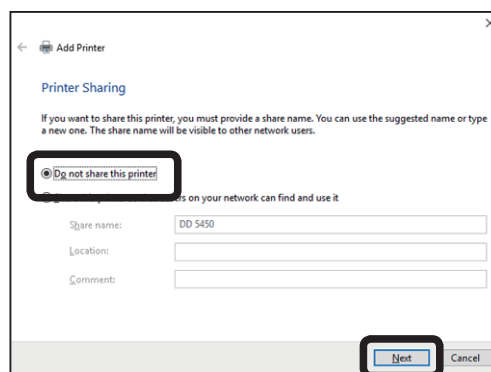
If the [Windows Security] confirmation screen appears, click the [Install] button.



- 12 If you will not share the Digital Duplicator on the network, select [Do not share this printer]. If sharing, select [Share this printer so that other on your network can find and use it] and enter the Share Name. Click the [Next] button.

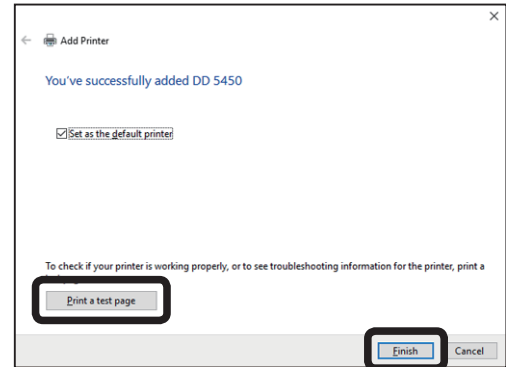
REFERENCE

If [File and printer sharing] is disabled, this screen does not appear.



Installing the Printer Driver

- 13** Click the [Finish] button.
To print a test page before finishing, click the [Print a test page] button.



REFERENCE

- Confirm the following items when printing a test page.
 - Make sure that the computer and the Digital Duplicator are correctly connected.
 - Make sure that the Digital Duplicator is turned ON.
 - Make sure that the Digital Duplicator is in standby status (correct errors if any).

- 14** The printer driver installation is complete.
An icon will be added to [View Devices and Printers].

Remove the CD-ROM from the computer and store it in a safe place.

Chapter 3

Printing

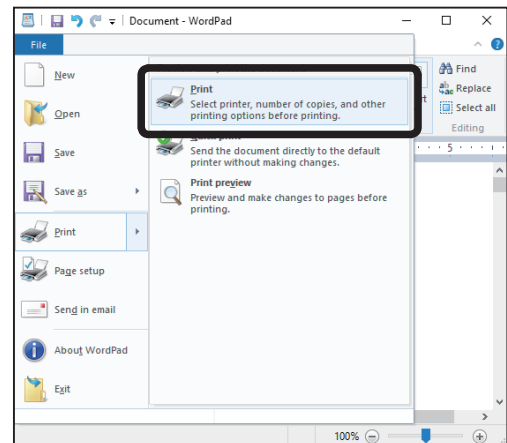
This chapter describes procedure for print condition settings and the process for printing.

.....
Print Settings and Printing 18
.....

Print Settings and Printing

This section describes the procedure for print settings and the printing process. The procedure for printing differs depending on the software you are using. Refer to the software manual for more information. The following explanation uses WordPad, provided with Windows 10, as an example.

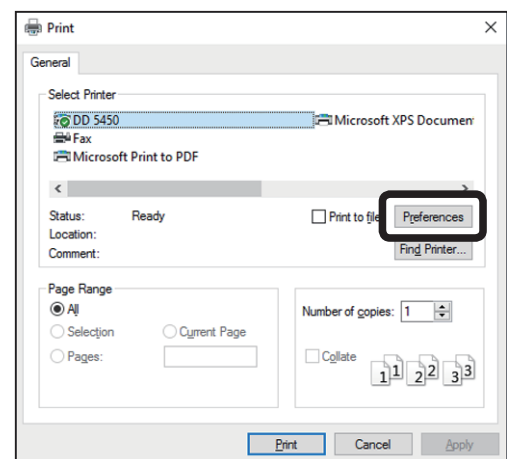
- 1 Click [File] menu and point to [Print].
Then click [Print].



- 2 The [Print] dialog box appears. Select a printer driver that you are using, then click the [Preferences] button.

REFERENCE

Depending on application software, click the [Property] button.

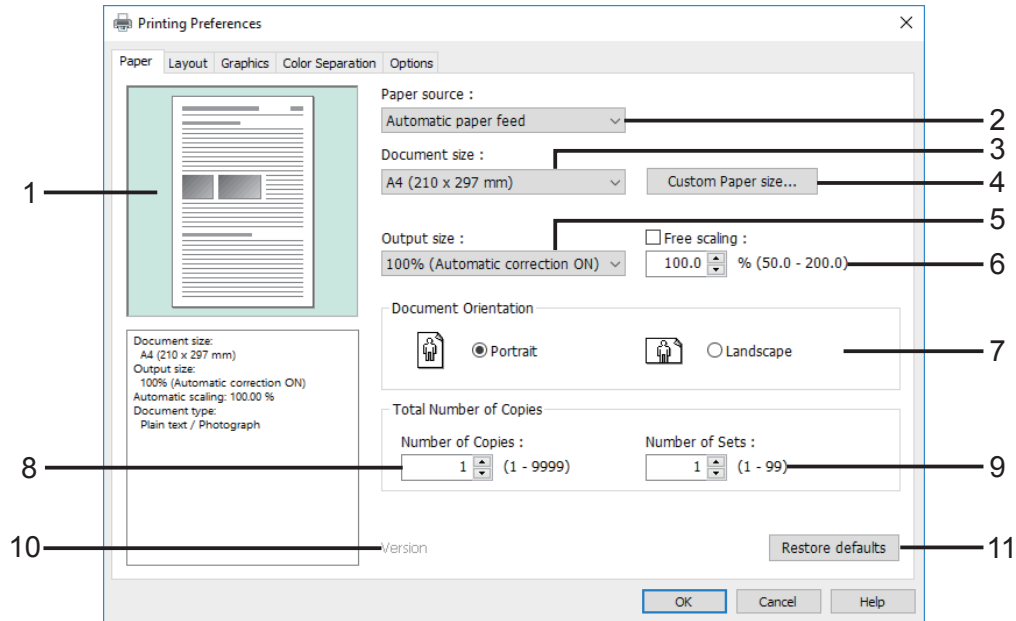


- 3 Make the print settings on each tab, then click the [OK] button.
- 4 Confirm the contents of the [Print] dialog box.
Enter the [Page Range] and the [Number of copies:].
Note that if [Collate] is selected, a print set will be printed for each page.
- 5 Click the [Print] button.
Printing starts.

REFERENCE

- If the printer driver was installed by selecting [Print to File], [Save as] dialog appears.
Select a destination to save, then enter a file name and click the [Save] button.

[Paper] tab



1. Preview

Shows the printed image for the current settings.

2. Paper source

Sets the source from where the paper is fed. Set the source to match the printer you are using. When you select [Automatic paper feed], the paper source that supports the paper size that you selected is automatically selected. If [Panel Setting] is selected, the paper source set at the control panel is selected. If you select a paper source other than [Automatic paper feed] or [Panel Setting], make sure that the correct paper size is being fed from that paper source.

3. Document size

Sets the Document size for the document. Adjust the paper size to the document being printed.

The Document size and types shown in the list are supported by the printer.

4. Custom Paper size

Allows you to set custom paper sizes.

5. Output size

To enlarge or reduce the print job to match the size of the paper, select a paper size from the [Output size] list.

Output sizes in the list correspond to the sizes supported by the Digital Duplicator that you use.

REFERENCE

- [100% (Automatic correction ON)] normally prints at 100%. If [Document size] is larger than the maximum paper size that the Digital Duplicator supports, the document is reduced and printed to fit on the maximum paper size.

Continue Page....

6. Free scaling

If you set [Free scaling], you can freely adjust the percent of change in the document. You can set the change in a range of 50% to 200%. To print the document at normal size (100%), select [Equal to document size].

7. Orientation

Specifies the orientation in which the document is printed. Set the layout in which the document is to be printed [Portrait] (vertical orientation) or [Landscape] (horizontal orientation). Match this to the shape of the document being printed. Select [Portrait] for vertically long documents. Select [Landscape] for horizontally long documents.

REFERENCE

Printing on an incorrect document size or orientation may cause the document to be printed in the wrong position or the wrong size.

8. Number of Copies

Sets the number of copies to be printed. You can set a value from 1 to 9999. If it is possible to set the number of copies in the application software, then you need to set the number of copies in either the printer driver or the application software. Some application software cannot be set to the 9999 upper limit.

9. Number of Sets

Sets the number of sets of copies to be printed. You can set a value from 1 to 99.

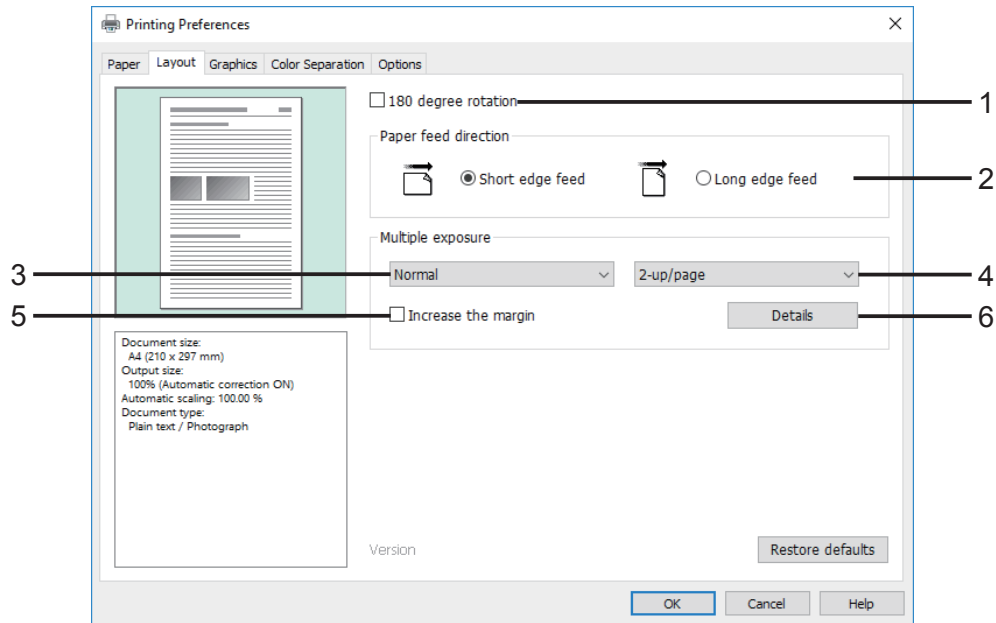
10. Version

Displays the version of the printer driver.

11. Restore defaults

Returns the settings to their default values.

[Layout] tab



1. 180 degree rotation

Specifies the direction in which the document is printed. Check this box to print the document rotated 180 degrees.

2. Paper feed direction

Specifies the direction in which the paper is fed. Set the direction in which the paper is fed.

3. Multiple exposure

Multiple pages of image can be combined on 1 page.

Mode	Description
Normal	Normal printing. Document: 1 2 3 → Output: 1 2 3
Multiple	Prints multiple copies of the document on one page. Document: 1 2 3 → Output: 1 1 2 2 3 3
Combine	Prints different documents on one page. Document: 1 2 3 → Output: 1 2 3

REFERENCE

- If you can set multiple exposure using application software, set it using either one.
- This function sometimes may not be applicable if you use function that creates a print data file by checking the [Print to file] box at the time of printing. In that case, you need to install the printer driver for printing the data to file.
(→ P.6 “Installing the Printer Driver with installer”)

Continue Page....

4. n-up/page, n-images/page

Enabled only when [Multiple] or [Combine] is selected.

Select n-up (pages) to be printed on one page from the followings:

2-up, 4-up, 6-up, 8-up, 9-up, 16-up, 25-up

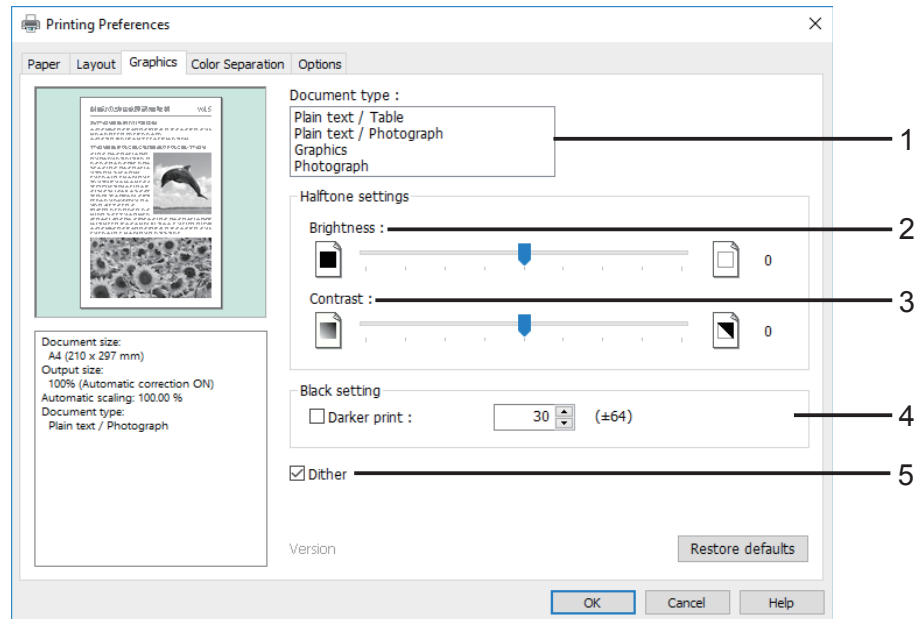
5. Increase the margin

When printing multiple documents on one sheet, insert the margin around each document image. When the original documents have an enough margin, clear the check box.

6. Details

Sets function relating to each mode of [Multiple exposure].

[Graphics] tab

**1. Document type**

Specifies the document type depending on the content of the document. You can print documents at a setting that is suitable for the content of the document.

2. Brightness

Adjusts the brightness and darkness of the image. Increasing the value makes the images brighter, decreasing the value makes the images darker.

3. Contrast

Setting the value higher makes the darker areas darker and the light areas lighter. Lowering the value reduces the contrast between the dark and light portions in the halftone parts of the image.

4. Black setting

Use this setting to print black color of the document darker. Increasing the value makes black color darker, decreasing the value makes black color lighter.

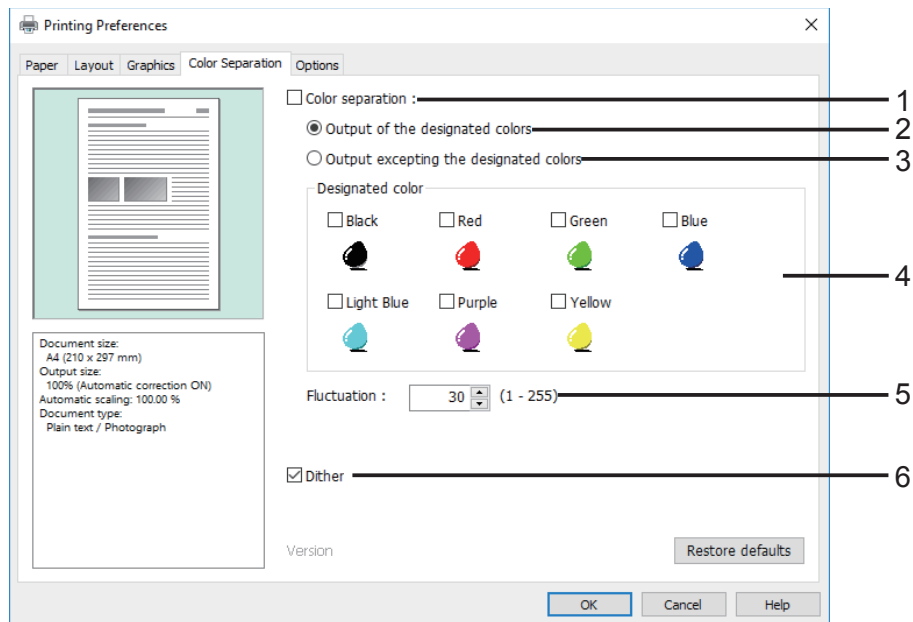
REFERENCE

- “Black setting” is for adjusting the density of all colors, not only black.
- Use “Black setting” if you get halftone image from the solid portion of the document.

5. Dither

Prints intermediate colors in halftones. Remove the check from this check box to print intermediate colors without halftones.

[Color Separation] tab



1. Color separation

Check this check box to do color separation. You can have the printer driver do color separation when you print. This function makes it easy to print documents with several colors. When you do color printing with color separation, set the color in the application software beforehand. Set the available colors in [Designated color] to do this kind of color printing.

2. Output of the designated colors

Only the color selected in [Designated color] is printed.
You can select more than one color.

3. Output excepting the designated colors

Color other than that selected in [Designated color] is printed.
You can select more than one color.

4. Designated color

Specifies colors to be printed or not to be printed.
[Designated color] are controlled according to their RGB values. The RGB values of the [Designated color] are as follows.

[Black]	(R: 0 ,G:0 ,B: 0)
[Red]	(R: 255 ,G:0 ,B: 0)
[Green]	(R: 0 ,G:255 ,B: 0)
[Blue]	(R: 0 ,G:0 ,B: 255)
[Light Blue]	(R: 0 ,G:255 ,B: 255)
[Purple]	(R: 255 ,G:0 ,B: 255)
[Yellow]	(R: 255 ,G:255 ,B: 0)

5. Fluctuation

Fluctuation can be used to include a range of values for the designated color with the RGB value of the [Designated color] as a base. Use it to specify colors that are nearly the same as the [Designated color] when doing color separation.

For example, if you set a value of 50 for the [Fluctuation] value for a [Designated color] of red (R:255, G:0, B:0), then color separation will be done for a designated color that covers a range of colors that are R (205 to 255), G (0 to 50), and B (0 to 50).

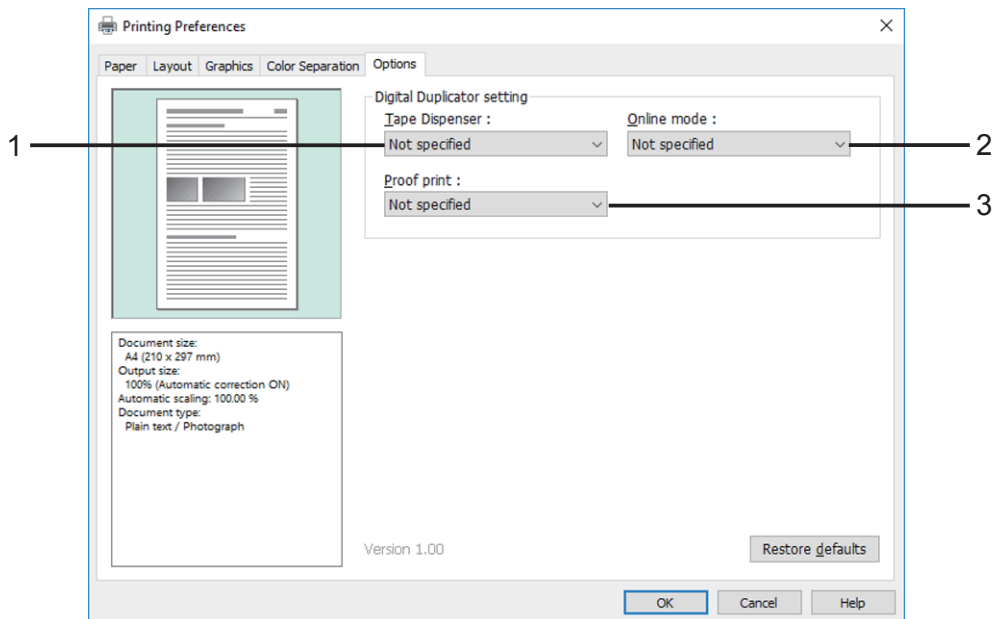
REFERENCE

Color separation may not be done correctly depending on the application software.

6. Dither

Prints intermediate colors in halftones. Remove the check from this check box to print intermediate colors without halftones.

[Options] tab



1. Tape Dispenser

Selects tape dispenser type.

Select [Not specified], [ON], or [OFF]. If you select [Not specified], the setting follows the Digital Duplicator that you are using.

REFERENCE

- When a tape dispenser with printing function is installed, you can use printing function.

2. Online mode

Change online mode setting of the Digital Duplicator before printing.

Select [Not specified], [Auto], or [Manual]. If you select [Not specified], the setting follows the Digital Duplicator that you are using.

REFERENCE

- Some models do not support online mode. If the Digital Duplicator that you are using does not support online mode, this item does not appear on the screen.
- Some models require to be upgraded even they support online mode. Contact a your service representative for upgrading.

3. Proof print

Start printing after changing the proof print setting of the Digital Duplicator.

Select [Not specified], [ON], or [OFF]. If you select [Not specified], the setting follows the Digital Duplicator that you are using.

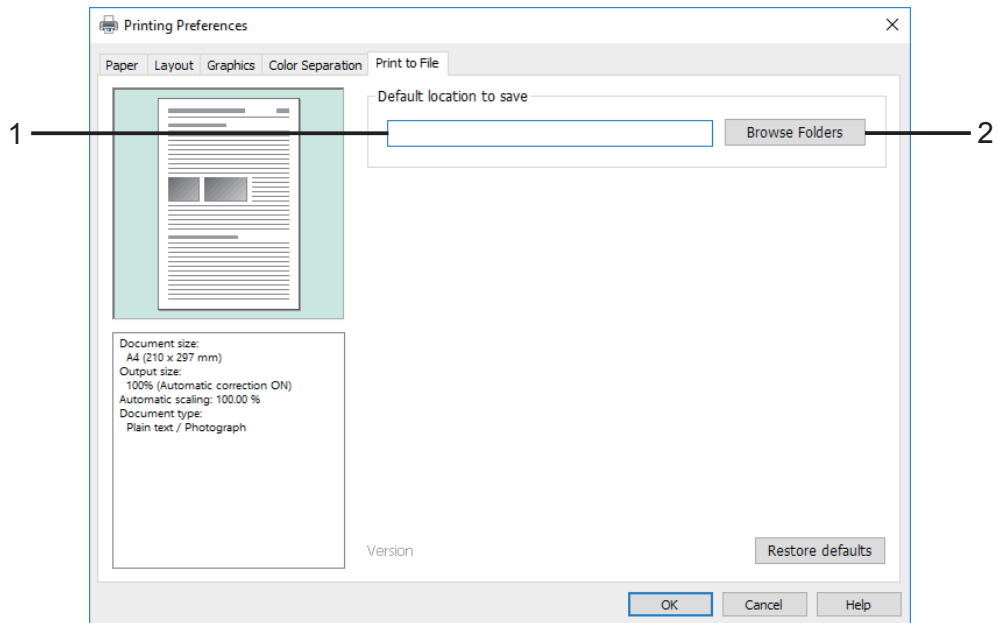
REFERENCE

- [Proof print] appears only for the Digital Duplicator that supports proof printing.

[Print to File] tab

REFERENCE

- If the printer driver was installed by selecting [Print to File], [Print to File] tab appears instead of [Option] tab.



1. Default location to save

Opens the folder designated in this field as location to save when executing [Print].

2. Browse Folders

Opens a dialog to get the path of a folder.

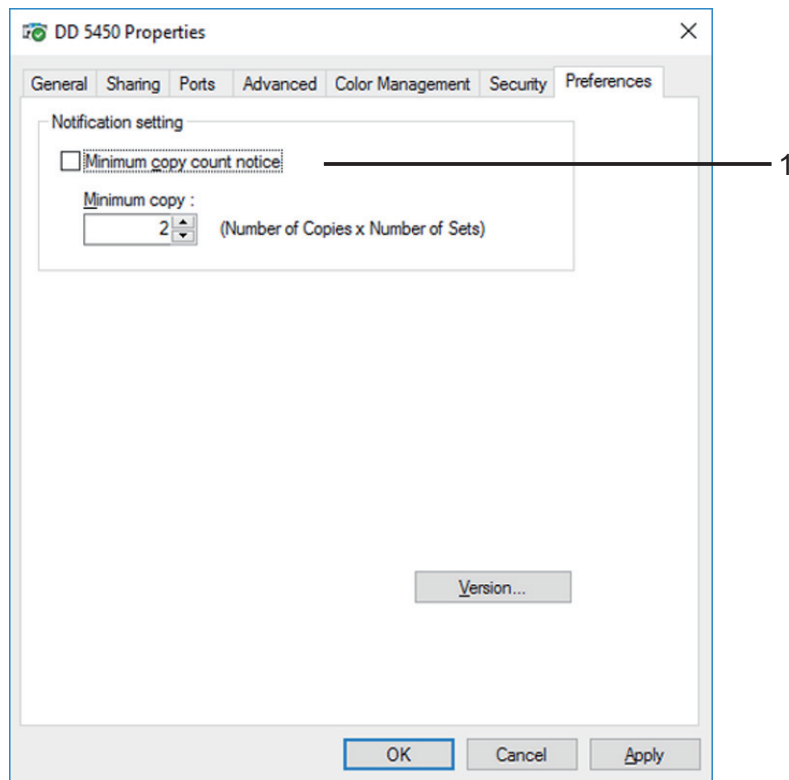
REFERENCE

- [Save as] dialog appears at the time of printing.
Select a location to save, then enter a file name and click the [Save] button.
- [Save as] dialog may not appear with some applications such as Windows Store apps.
In such case, the file is saved in the designated folder.
- This function is enabled Digital Duplicator equipped with the optional USB flash drive.

[Preferences] tab

REFERENCE

- This setting item appears on the screen of [Printer properties], not on that of [Printing preferences].



1. Minimum copy count notice

When the total number of copies (Number of Copies × Number of Sets) is less than the specified minimum copy count, the message appears.

You can select either 'continue printing' or 'stop printing'.

If you want to prevent the master from being wasted because you have forgotten to set Copy count (Number of Copies × Number of Sets), check this check box to enable the setting.

Chapter 4

Software Uninstallation

This chapter describes the uninstallation procedure for the Printer Driver on computers.

.....	
Uninstalling the Printer Driver.....	30
Windows 7/Windows 8/Windows 8.1/Windows 10.....	30
Windows Vista.....	34
.....	

Uninstalling the Printer Driver

The following describes the procedure for uninstalling the printer driver.

Windows 7/Windows 8/Windows 8.1/Windows 10

IMPORTANT

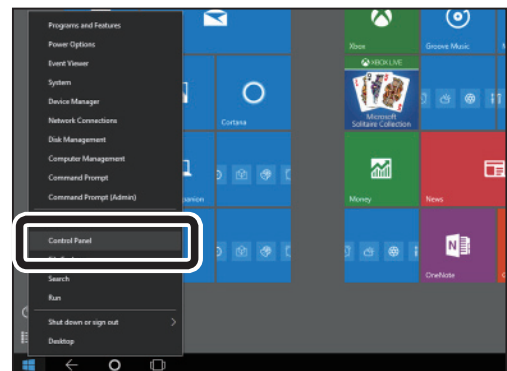
- If you are requested to enter password of administrator account during uninstallation of the printer driver, enter the password of the user with administrative rights shown.

1 Before starting printer driver uninstallation, turn off the Digital Duplicator to disconnect from the computer.

2 Open [Control Panel].

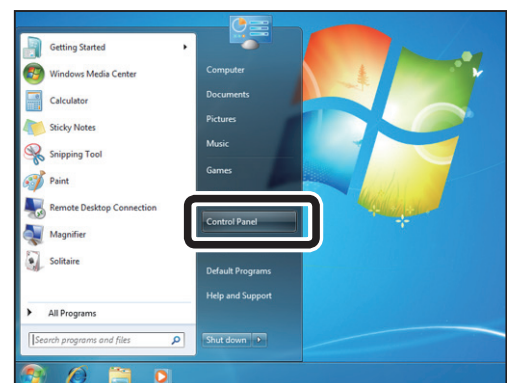
- **Windows 8/Windows 8.1/Windows 10**

Move the mouse cursor to the lower-left corner of the screen and right-click the start button. Select [Control Panel] on the menu.

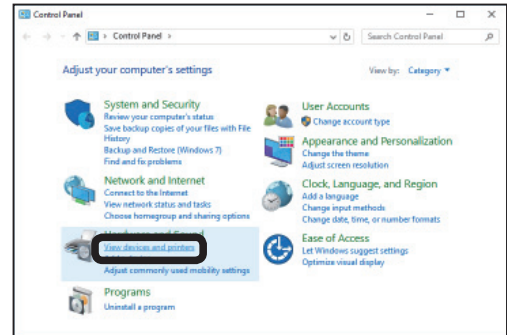


- **Windows 7**

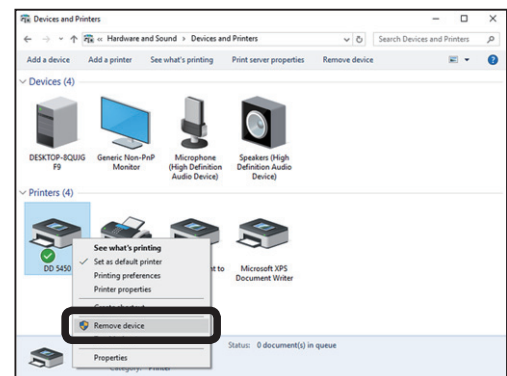
Click the [Start] button on the task bar and click [Control Panel] on the menu.



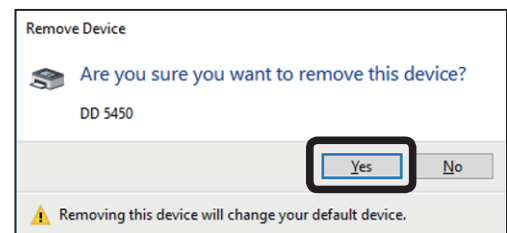
- 3 Click [View devices and printers] under the [Hardware and Sound] menu.



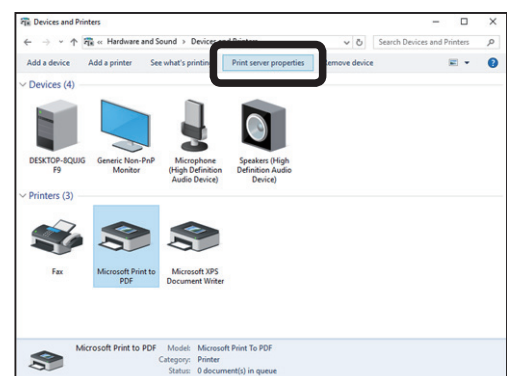
- 4 Select and right-click the Digital Duplicator. Then click [Remove device] from the menu.



- 5 The [Remove Device] dialog box appears. Click the [Yes] button.

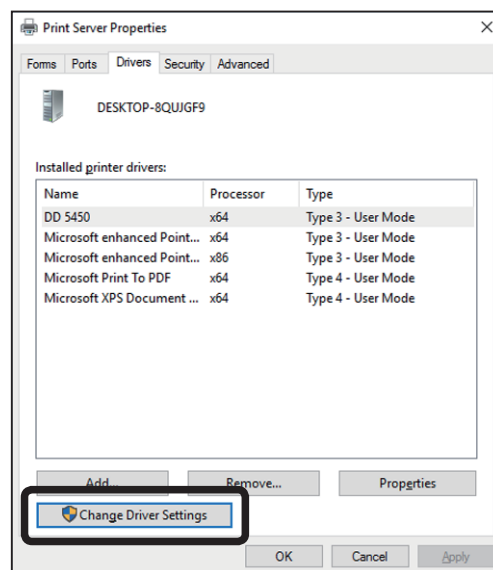


- 6 Click [Print server properties].
* When not displayed, click other printer icon.

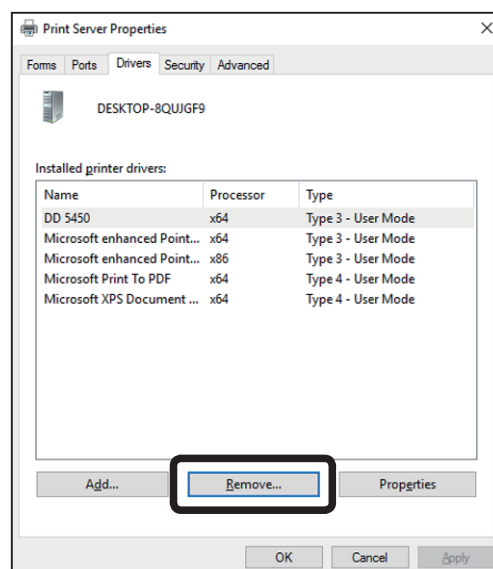


Uninstalling the Printer Driver

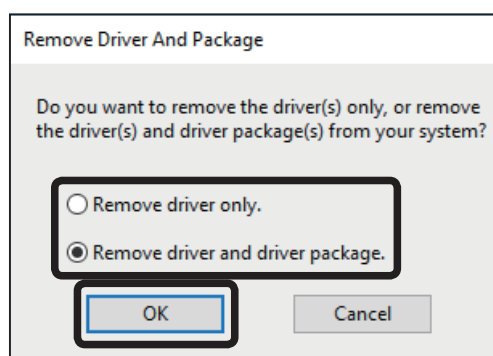
- Click the [Drivers] tab in the [Print Server Properties] dialog box.
Click the [Change Driver Settings] button.



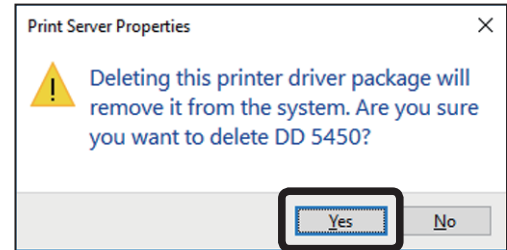
- Select Digital Duplicator and click the [Remove] button.



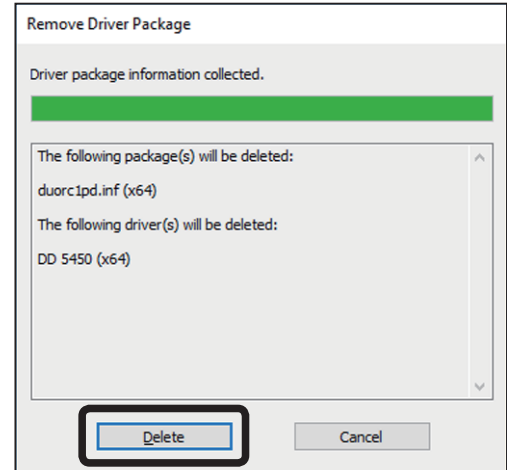
- The [Remove Driver And Package] dialog box appears.
Select [Remove driver and driver package] and click the [OK] button.



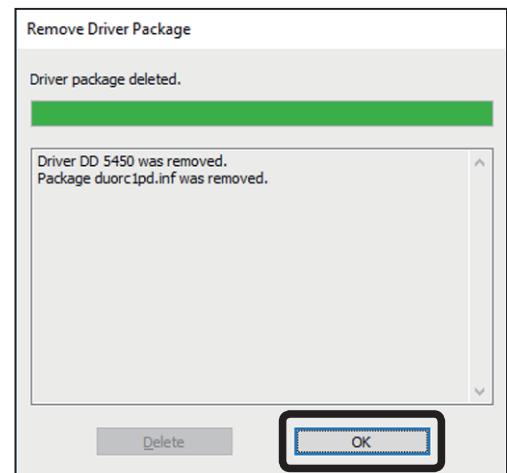
- 10 The [Print Server Properties] dialog box appears. Click the [Yes] button.



- 11 The [Remove Driver Package] dialog box appears. Click the [Delete] button.



- 12 Once the message "Driver package deleted." appears, uninstallation of the printer driver is complete. Click the [OK] button.

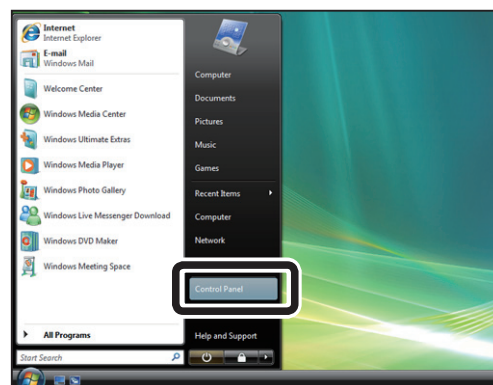


Windows Vista

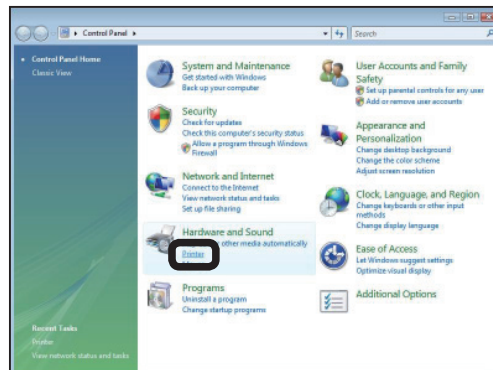
IMPORTANT

- If you are requested to enter password of administrator account during uninstallation of the printer driver on Windows Vista, enter the password of the user with administrative rights shown.

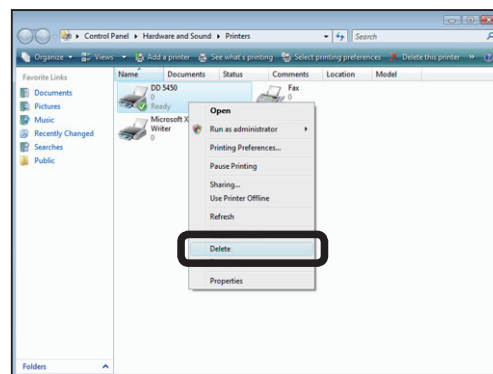
- 1 Click the [Start] button on the task bar and click [Control Panel] on the menu.



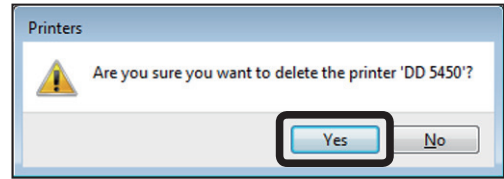
- 2 Click [Printer] under the [Hardware and Sound] menu.



- 3 Select and right-click the Digital Duplicator, and click [Delete] from the menu.



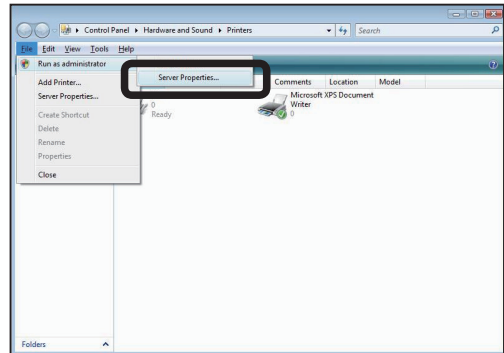
- 4 The [Printers] dialog box appears.
Click the [Yes] button.
- * If the Digital Duplicator is set to [The default printer], a message that the default device has been changed will appear.
Confirm the message and click [Close].



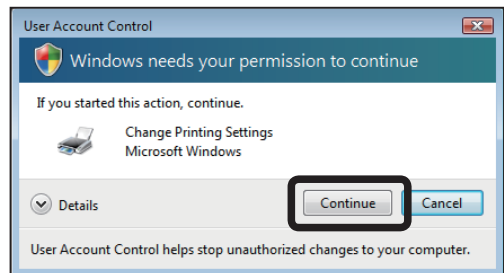
- 5 Select [File] - [Run as administrator] - [Server Properties] from the menu bar.

REFERENCE

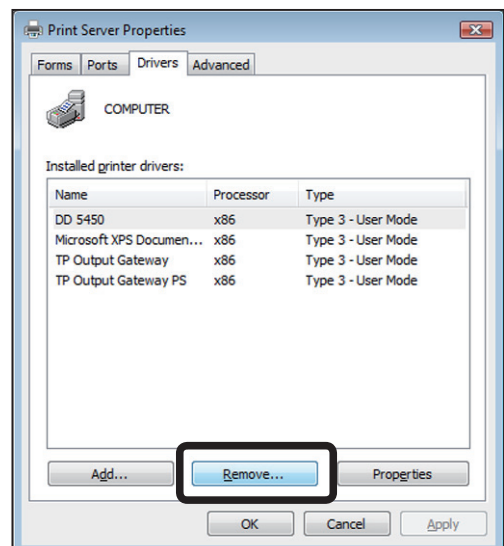
- When the menu bar is not displayed, it can appear temporarily by pressing the Alt key.



- 6 The [User Account Control] dialog box appears.
Click the [Continue] button.



- 7 Click the [Drivers] tab in the [Print Server Property] dialog box.
Select Digital Duplicator and click the [Remove] button.

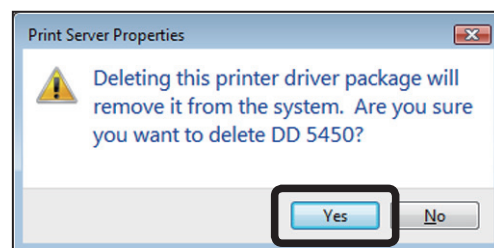


Uninstalling the Printer Driver

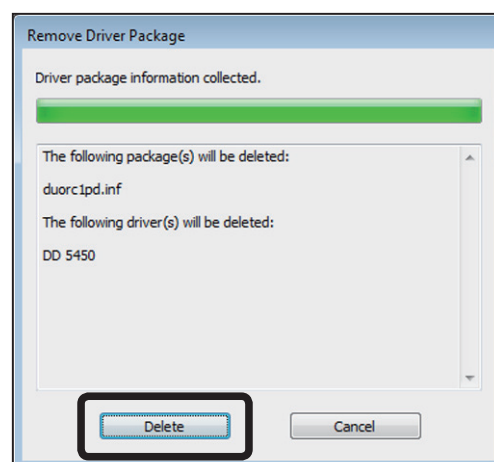
- 8 The [Remove Driver And Package] dialog box appears.
Select [Remove driver and driver package] and click the [OK] button.



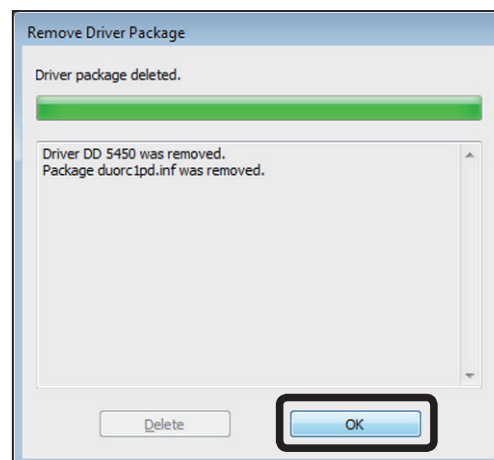
- 9 The [Print Server Properties] dialog box appears.
Click the [Yes] button.



- 10 The [Remove Driver Package] dialog box appears.
Click the [Delete] button.



- 11 Once the message "Driver package deleted." appears, uninstallation of the printer driver is complete.
Click the [OK] button.



Chapter 5

Troubleshooting

This chapter describes how to deal with problems that may occur during use of the printer.

.....	
Troubleshooting	38
Restrictions	43
.....	

Troubleshooting

Refer to this section if you encounter problems such as 'cannot print'.
For problems with the Digital Duplicator main unit, refer to the DD 5450 Operating Instructions.

■Printing Problems

Symptom	Solution																																
Large characters cannot be printed	The font may not be compatible with large points. Change to a font that is compatible with larger points.																																
Thin line cannot be printed or does not appear.	Thicken the line.																																
Small characters are not visible.	Enlarge the font size.																																
Color separation function does not work properly	<div>Use a color that is applicable to color separation. Colors that are compatible with color separation have the RGB values shown in the following chart.</div> <div><Compatible Color Separation RGB Values></div> <table><tr><td></td><td>R</td><td>G</td><td>B</td></tr><tr><td>Black</td><td>0</td><td>0</td><td>0</td></tr><tr><td>Red</td><td>255</td><td>0</td><td>0</td></tr><tr><td>Green</td><td>0</td><td>255</td><td>0</td></tr><tr><td>Blue</td><td>0</td><td>0</td><td>255</td></tr><tr><td>Light blue</td><td>0</td><td>255</td><td>255</td></tr><tr><td>Purple</td><td>255</td><td>0</td><td>255</td></tr><tr><td>Yellow</td><td>255</td><td>255</td><td>0</td></tr></table> <div>Set [Fluctuation] to larger (or smaller) value.</div> <div>The color separation function may not work properly depending on the application being used.</div>		R	G	B	Black	0	0	0	Red	255	0	0	Green	0	255	0	Blue	0	0	255	Light blue	0	255	255	Purple	255	0	255	Yellow	255	255	0
	R	G	B																														
Black	0	0	0																														
Red	255	0	0																														
Green	0	255	0																														
Blue	0	0	255																														
Light blue	0	255	255																														
Purple	255	0	255																														
Yellow	255	255	0																														
Printing does not start even after clicking the [Print] button.	<div>It may take time for image processing according to the Computer's CPU speed or memory capacity. Please wait.</div> <div>Make sure that the Digital Duplicator is turned ON.</div> <div>Check the cable connecting the computer and the Digital Duplicator. If you are using a USB cable, make sure that the length is 3 m or shorter. Try to use a shorter cable if possible.</div>																																
Master is made for each number of copies.	<div>[Collate] is selected. Deselect [Collate] in the [Print] dialog box.</div> <div>[Collate pages] may be selected and you cannot change the setting according to the application software. If this is the case, set [Copies] to 1 and specify one page in order to print only one page, and then make necessary copies for the specified page on the Digital Duplicator.</div>																																

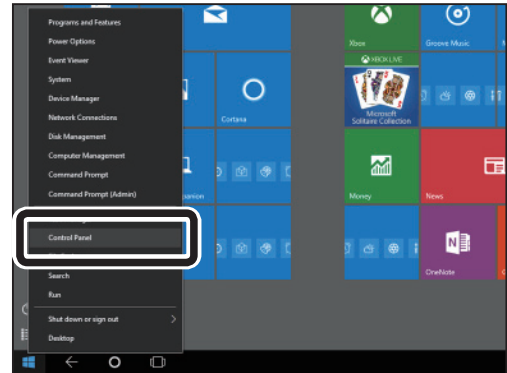
Symptom	Solution
Print is light	The print image is too light. Decrease the brightness with the printer driver. Try adjusting the brightness or darkness on the application software.
Print is dark	The print image is too dark. Increase the brightness with the printer driver. Try adjusting the brightness or darkness on the application software.
Intermediate colors cannot be printed or are printed completely in black.	The dither function is not set. Make sure that the "Dither" check box is checked in the [Graphics] tab.
The printed image is different from the Computer screen.	Select image mode from [Document type] in [Graphics] tab. If the solid black portion is printed in SCREEN mode, adjusting [Brightness] to minus direction may improve the symptom.

■ When the printer driver cannot be automatically installed on Windows 7/Windows 8/Windows 8.1 /Windows 10 with Plug and Play function

1 Open [Control Panel].

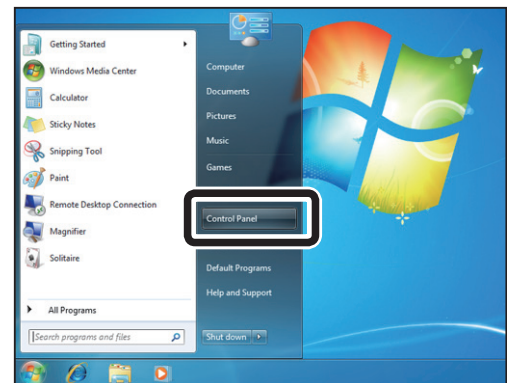
- **Windows 8/Windows 8.1/Windows 10**

Move the mouse cursor to the lower-left corner of the screen and right-click the start button. Select [Control Panel] on the menu.

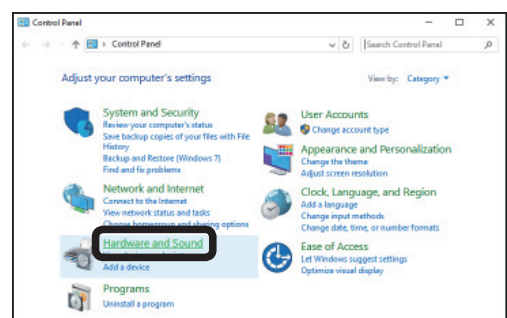


- **Windows 7**

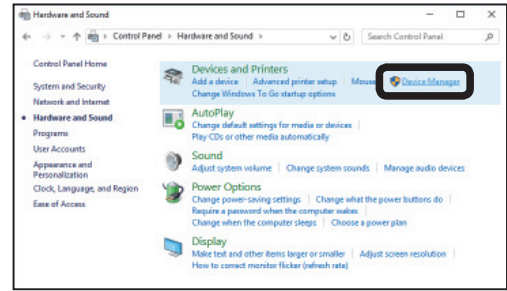
Click the [Start] button on the task bar and click [Control Panel] on the menu.



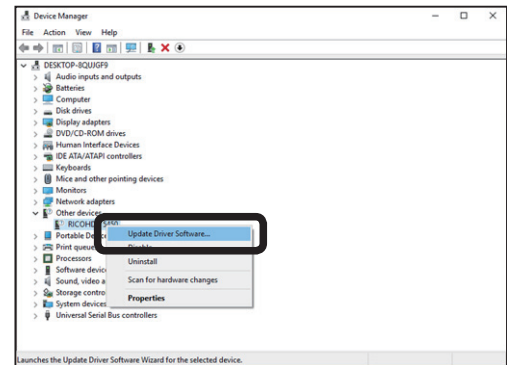
2 Click [Hardware and Sound].



3 Click [Device Manager].

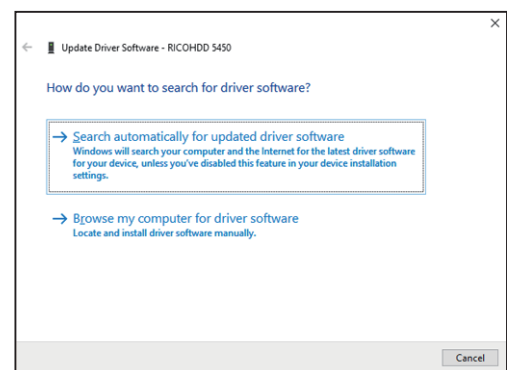


4 Select and right-click Digital Duplicator under [Other devices], and click [Update Driver Software] from the menu.



5 Select the searching method for driver file.

- When the driver installation with installer is complete:
Click [Search automatically for updated driver software].
The best driver is selected and printer addition is complete. Go to step 10.
- When the driver is not installed:
Insert the CD-ROM that came with the Digital Duplicator into your computer's CD-ROM drive.
Click [Browse my computer for driver software]



5

Troubleshooting

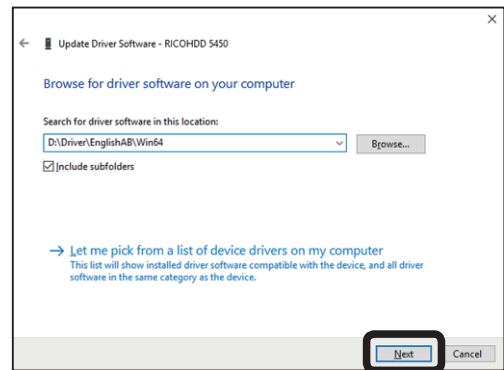
Continue Page....

Troubleshooting

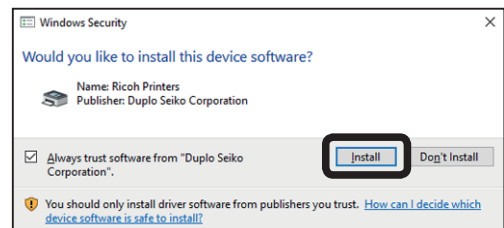
- 6 Specify the folder that contains the printer driver for [Search for driver software in this location].
Example D:\Driver\EnglishAB\Win64

Here, the CD-ROM is in Drive D and you are setting up for English(AB paper).

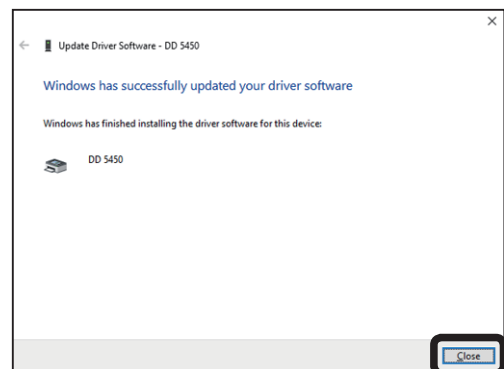
Check the [Include subfolders] check box and click the [Next] button.



- 7 [Windows Security] screen appears.
Click the [Install] button to continue the installation.



- 8 The printer driver installation is complete.
Click the [Finish] button.



Restrictions

1. Restrictions on Windows 8/Windows 8.1/Windows 10 (printing operation)

When printing with Windows Store apps that was added to Windows 8, there are some restrictions for changing settings before printing.

Items that you can change the settings are as follows.

- Number of Copies
- Orientation
- Document size

For items other than above, open [Control Panel] from the desktop environment, then change [Printing preferences] of printer.

However, setting change may not function depending on application.

Messages such as no paper error appear on the desktop environment.

You can use all functions for printing with Desktop apps.

2. Restrictions on Windows 8/Windows 8.1/Windows 10 ([Print to File])

Added printer exclusively for [Print to File] using the installer may not be able to be used with Windows Store apps.

Use the printer exclusively for [Print to File] with Desktop apps.

3. Color Separation Function

The color separation function process uses the color's RGB values as a standard. Therefore, conversion to RGB values is required for printing of data representing color with CMYK values. In such a case, you may not get intended printing image because of conversion error. Adjust the printing image by changing the setting of Fluctuation.

4. Multiple Exposure Function

Printing may not be performed correctly when printing a document using large-sized image. In that case, changing image size as below may improve the printing.

- Enlargement / Reduction
- Trimming
- Changing resolution

This image shows a full page of a handwriting practice worksheet. It consists of multiple sets of three horizontal dashed lines, providing a guide for letter height and placement. The lines are evenly spaced across the entire page, leaving ample room for writing practice. There is no text or other markings on the page.

